

Great Hallingbury Highlights

Spring 2026

Vol. 109

An independent publication giving news on matters affecting Great Hallingbury



Winter Sunrise over Great Hallingbury

Photograph courtesy of Val Waring

Editorial

Weather

Incredibly I had a couple of plants in flower out before Christmas! Then we had that very cold spell but it is now good to see buds and flowers emerging; snowdrops and crocuses are appearing and spring bulbs are developing into buds whilst there seem to be more small birds around. It is a promise of better weather to come.



December Flowers

Some days the rain has been relentless - over 150% of average in January according to the Met Office - so let us hope that it has filled up all the aquifers and reservoirs. It would be ironic to end up with a hosepipe ban this summer. But when the sun did shine (just slightly more than average in January), it was uplifting.

Elections

It is good that Essex County Council is going ahead with elections for councillors this year after the delay imposed by the government in 2025. On 7th May you can enjoy your civic right to cast a vote for your favoured candidate to represent us as part of the new Takeley Division. (More on this on page 15)



But rights bring responsibilities too so it is important that you exercise this right to vote. We all need to be part of choosing our elected representatives and, if we don't, we have no right to complain afterwards if things are not as we would wish. So please vote on 7th May.

New Houses

There are several potential planning applications around. One is just within our parish on the corner of Beldams Lane and one or two in Little Hallingbury.

Even though these are all outside the main part of Great Hallingbury, we may find we

would be impacted by even more traffic taking a short cut through our village. The Parish Council is diligent in lodging objections, even when a development is outside the village, but the number of objections lodged can also be meaningful so, if you have concerns about these potential applications, please look out for opportunities to add your voice to the objectors.

I hope you all enjoy the advancing Spring and wish you well.

Editor

CONTENTS

2	- Details of Councillors and Village Contacts
3	- Editorial
4	- Easy Eating
5	- Fieldfars in Great Hallingbury - Chairman's Report
7	- Great Hallingbury Village Hall
8	- Hundred Parishes
9-13	- Parish Council
13	- BBC One's <i>Sort Your Life Out</i>
15	- Essex County Council Elections
17	- Book Corner
18-20	- The Demise of Hallingbury Place
20	- Quiz Questions
22	- Village Hall Events
22	- East Lodge
23	- Essex Police
24	- Bench on Flich Way
25	- Essex County Council
27	- Little Hallingbury Cricket Club - Great Hallingbury History Society
28-29	- Hallingbury Ladies
30	- Recycling and Waste News - Quiz Answers
31	- Hidden History
33	- District News - Litter Pick
34	- Essex Outdoors
35	- Easter - The Moveable Feast - Church Services in the Hallingburys
36	- Great Hallingbury Annual Parish Meeting - Calendar

Easy Eating

Spring Chicken Bake

Serves 4 Takes 40 minutes

Ingredients:

- 1 tbsp olive oil
- 500 g (1 lb) chicken thigh fillets
- 1 onion, chopped
- 1 garlic clove, crushed
- 1 courgette, sliced
- 1 x 400 g tin chopped tomatoes
- 1 tbsp tomato puree
- 1 tsp dried rosemary
- 1 400 g tin butterbeans, drained

Directions:

1. Preheat the oven to gas 5, 190° C or fan 170° C
2. Heat the oil in a large roasting tray on the hob. Season the chicken thighs and add to the tin. Fry for 3 - 5 minutes until browned all over. Remove and set aside.
3. Add the onion, garlic and courgette to the tray and cook for 3 - 4 minutes, turning occasionally until softened.
4. Stir in the tomatoes, tomato purée and rosemary and simmer for 1 minute. Season, then return the chicken to the tray and add the butterbeans.
5. Transfer to the oven and roast for 25 minutes.



Traditional Fifteens or Cherry Mallow Slice

Popular in Irish bakeries and cafés

Ingredients:

- 15 digestive biscuits, crushed into fine crumbs
- 15 glacé cherries, halved
- 15 tbsp (or around 100 g) mini marshmallows
- 50 g desiccated coconut (for coating)
- 200 g (about half a tin) condensed milk

Method:

1. In a large mixing bowl, combine the crushed biscuits, halved cherries and marshmallows.
2. Pour in the condensed milk gradually and mix until everything is well coated and starts to stick together - you want a firm, but pliable, mixture.
3. Lay out a large sheet of cling film or parchment paper and sprinkle a layer of desiccated coconut on top.
4. Spoon the mixture into a log shape on the coconut, then roll it up tightly, coating the outside with coconut as you go.
5. Chill in the fridge for at least 3 - 4 hours (or overnight) until firm.
6. Once set, slice into thick rounds - usually about 2 cm each - and serve with a cuppa.

Rosemary Nugent

Fieldfares in Great Hallingbury

One weekend in late January, a large flock of fieldfares could be seen around the Harps Farm's field and Bedlars Green. They only stayed three days.



The fieldfare is a big, long tailed, stocky thrush. It can be identified by its light grey rump, white underwings and rather flapping, less undulating flight than a mistle thrush. It has a red-brown back and grey crown/nape. Heavily spotted below, its breast has a rusty-yellow tinge.

A winter visitor in the UK, the fieldfare breeds in Scandinavia and Eastern Europe.

A cement mixer and a prison bus crashed on the motorway.

Police advise the public to look out for a group of hardened criminals.

Parish Council Chairman



Hello to you all. May I wish you a Happy New Year and I hope you had a very Happy Christmas.

Your Parish Council, along with the Village Hall, hosted the Christmas Tree Lights event on Saturday, 29th November, and it was lovely to see so many people attend, what is now, an annual event. My thanks go to the Village Hall Committee and especially to Alan Pinnock for supplying, erecting and decorating the tree. Also thanks to Urška, our Clerk, who managed the shopping for the event.

Through the winter we have not been able to carry out much work in the churchyard but hope to start again in late February. Any offers of help would be most welcome.

The Parish Council has arranged for the car park at the Village Hall to have the white line markings for parking bays to be re-painted. This work will be carried out in January, weather permitting.

Those of you who walk along the Flitch Way may have noticed that the Parish Council has provided a new bench. Many thanks to Cllr Mark Coletta for his efforts in making this happen.

We hope soon to start work on the pond at Bedlars Green. This is to remove some of the trees that are getting dangerous and needs to be done before the Spring.

The Annual Parish Meeting will be held on Monday, 16th March, at 8.00pm. Do come along and find out what clubs there are in the village and what your Parish Council has been up to.

As usual, my thanks go to my fellow Councillors and, of course, to our Clerk, Urška, for all their hard work through the year.

*Alan Townsend, Chairman,
Great Hallingbury Parish Council.*




VANS AUTOS



MOT TEST CENTRE

Class 4 and Class 7 vehicles
Service and Repairs

Opening Hours
Monday – Friday 8am – 5pm
Saturday - by appointment only

Tel: 01279 724534
or 07778 217304



SPOTLESSLY KLEAN

Cleaning Services

Reliable, friendly and professional cleaning services

Weekly, fortnightly along with deep cleans personalised to your needs

Tel: 07876 616299

 [spotlessly.klean](https://www.instagram.com/spotlessly.klean)





Timber's

Boarding Cattery

 The Street, Takeley, CM226QW  01279 870738 

LTH Waste Removal and Luxury Toilet Hire (UK) Ltd



LTH (UK) Portable Toilets supplies and maintains building site toilets, with weekly / ad hoc servicing as required. Existing site toilets and welfare units can also be maintained for the duration of the building project.



LTH Waste Removal is your local service provider for liquid waste removal, including :

- Cesspits • Septic tanks • Klargesters and Bio disks



Whether you are arranging a wedding, private party or corporate event, let **Luxury Toilet Hire (UK) Ltd** provide you with the perfect toilet facility to make your occasion a memorable success. Please visit www.luxurytoilethire.co.uk



Based near Great Hallingbury, we provide a personal, professional and efficient service at very competitive rates.

For a free quotation, please contact us:
Tel: 01279 504638 or 01371 873003 Yard: 01371 871871 Email: info@luxurytoilethire.co.uk



Sweeps

Chimney Services

CLEAN CHIMNEYS ARE SAFER CHIMNEYS

Chimney Sweeping
Stove Servicing & Maintenance
Nest Removals
CCTV Inspections
Bird Guard & Cap Fitting
and much more

07703 740638

www.townandcountrysweeps.com






Great Hallingbury Village Hall



Update

I trust this message will find you, your family and friends well and in good spirit. Although now a distant memory, I do hope it was a good memory over the Christmas period for you and that 2026 brings health, happiness and a prosperous year to us all.

Before I talk about any updates for Great Hallingbury Village Hall, I would like to take this opportunity to say a huge thank you to all that supported the Village Hall in 2025 - that may be attending one of the fundraising events or giving up time to assist in a project concerning the Hall. Every little does help and it is hugely appreciated by all concerned.

In November our Christmas tree was erected to the front of the Village Hall. This was the fourth year of what has become an annual event on the Village Hall calendar. A turning on of the Christmas tree lights took place on Saturday, 29th November, and there were around sixty people in attendance including our MP, Chris Vince, County Councillor Susan Barker and District Councillor Geof Driscoll. A special thanks to Great Hallingbury Parish Councillor Alan Pinnock for his huge part in this event, including providing the wonderful tree for display.

The lighting up was followed with refreshments provided by Great Hallingbury Parish Council. There were sweets and chocolate provided for the children (and adults). A special thank you to Freda and Alan Townsend for providing the refreshments and to all our Parish Councillors for their attendance and support. Following on, we invited people to bring their own drinks and nibbles and stay to continue the social evening. It was lovely to see the community coming together for a special time of the year.

Saturday, 6th December, saw our last fundraising event of the year; our Christmas Quiz Night. All tables for this event were sold well in advance and there were around eighty-five people participating which was fantastic. A great return was earned with £431 profit raised for the Hall funds. Again, a massive thanks to all those involved in helping stage the event and to all those who attended in support of us.

Into the new year 2026. Looking ahead, there will be two Quiz Nights on Saturdays, 21st March and 5th December, to raise funds for the Hall. I must stress, however, that booking a table is essential. These nights have become extremely popular and we have a capacity limitation. I appreciate that, in the past, groups have just turned up but this will cause issues for us on the night. Thank you in advance for your understanding and cooperation.

On Sunday morning, 28th June, our Table Top Sale will take place in the Hall - details may be found on page 21. Later on in the year, for the fifth year running, the Hall will have its Christmas Tree Switch On event. This is scheduled for Saturday, 28th November, at 6.30pm. All are welcome !

With regards to the Hall, I can say with confidence and great pleasure that we are in a good position all round. It is important that residents of Great Hallingbury know this. Over the years, we have seen the disappearance of our school, our post office/ shop and our pub in this village. This is our last community building standing and we will always need your support. This is not my Village Hall or the committee's but your's, so if you have any ideas for fundraising this year, want to get involved in existing projects, events, information on what we are doing and/or have done, then please feel free to contact me.

*Lee Cox, Chair Person
Great Hallingbury Village Hall Committee*

The Hundred Parishes Society



The walk descriptions that can be downloaded from The Hundred Parishes website refer to many interesting buildings along each route. Some of the larger and more ancient homes are described as hall houses, having been constructed as a communal hall with one or two wings at the side. The hall would have been heated by a log fire in the centre of the room, its smoke drifting upwards through vents in the roof.

The hall house design fell out of favour, mainly during the period 1550 to 1650 AD, when it became fashionable to instal a fireplace against a wall, complete with a flue or chimney which took away the smoke and also provided an upward draft to encourage the fire to burn.



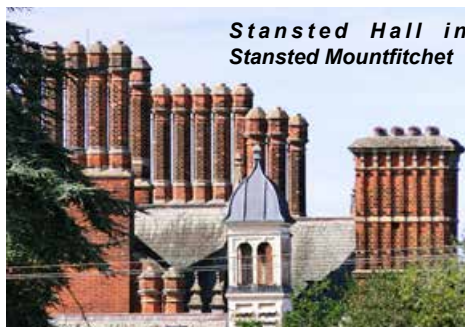
Badynghams, Great Waltham



Tudor House, Newport

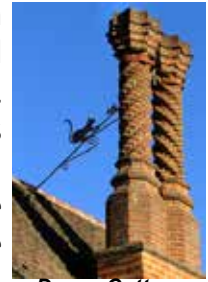
Where the flue or chimney breached the roofline, it often continued upwards as a chimney pot. In grander houses, these became fashionable accessories and a good number survive today.

During the 19th century, more and more houses had fires and now they tended to be fuelled by coal. Chimneys became narrower and their pots were less ornate. Fireplaces would be installed in multiple rooms, so houses might have several chimneys.



Stansted Hall in Stansted Mountfitchet

From mid-20th century, open fires were largely replaced by various forms of central heating and chimney pots are not usually required on new houses. Older pots are sometimes removed before they need maintenance.



Dynes Cottage, Finchingfield.

You are encouraged to look up at our surviving chimney pots, especially those from long ago. There are some wonderful local examples: Badynghams at Great Waltham; Tudor House in Newport; Cable Cottage in Puckeridge; Brook House at North End, Felsted and Stansted Hall in Stansted Mountfitchet. Others not so easy to find, but on various walk routes: Moyns Park in Steeple Bumpstead, Broadoaks in Wimbish, and Dynes Cottage in Finchingfield.

Happy chimney spotting!

Ken McDonald, Secretary
www.hundredparishes.org.uk

Crow Vision

Two crows were in a field when they noticed a figure that looked like a man in the distance.



"See that over there? What is that?", says the first crow.

The second crow takes a long look, "That's a scarecrow. Looks authentic, doesn't it."

"How can you tell it's a scarecrow and not a person?", replies the first crow.



"Look at its hand. No mobile phone".



Highlights from the Minutes of Meetings of Great Hallingbury Parish Council

3 November 2025 & 5 January 2026

Present (at one or both meetings): Cllr Alan Townsend (Chairman), Cllrs David Barlow, Mark Coletta, Neil Jackson, Andrew Noble, Alan Pinnock and Val Waring, Mrs Urška Sydee (Clerk), District Cllr Geof Driscoll and Essex County Cllr Susan Barker

Chairman's Activities

Chairman, Cllr Townsend reported he had:

- Met with MP in Hatfield Broad Oak
- Attended EALC AGM
- Great Hallingbury litter pick
- Met Head of Pastoral and Wellbeing at Howe Green House School where he discussed possibility of children creating road signs based on the 30mph speed limit in the Village and for year 6 children to potentially use the speeding gun outside school entrance
- Attended Parish Councils' *Working Together* forum
- Poppy Appeal event at Pantiles
- Chaired UALC AGM which was not quorate. Attended later AGM and again elected Chairman
- Clearing churchyard with Cllr Jackson
- Attended Remembrance Service
- UDC *Waste Journey* event in Dunmoow
- Met with two potential contractors for white lining the car park
- Christmas Lights Switch On
- St Giles' Church for Christmas Tree decorations and Nine Lessons and Carols
- Checking defibrillator weekly
- Meeting with clerk weekly

Essex County Council

Essex Cllr Susan Barker reported that she attended the Poppy Appeal event at Pantiles; reported pothole outside Pantiles and will look into reported drainage problem down The Street.

Uttlesford District Council

District Cllr Geof Driscoll reported on the Government local reorganisation. In the previous two months, UDC had argued the case for local government reorganisation with five unitary authorities. All presentations plus an explanation are available from their website.

Bloor Homes - as maximum 10 people are allowed to speak at the Planning Committee meeting, should the Council wish to speak they should beware repetition of arguments. He also reported that there will be some changes to the arrangements for District Councillor surgeries which will still be two hours long.

Highways Matters

Potholes have appeared again and the signpost opposite Pantiles had been knocked down, both of which Cllr Coletta will report to Highways and to Essex Cllr Barker

Hallingburys' Speed Watch Group

Bad weather has prevented the group being active. The Speed Watch Co-ordinator advised it would be impractical to take a speed gun to Howe Green House School. However, the Council still supports the children to make signs and will consider a small prize to be awarded.

Neighbourhood Watch

Cllr Coletta reported that the crime report format has changed and that the meeting for our area was held in Takeley.

Village Hall

Cllr Pinnock reported that the hearing loop system is now available in the Village Hall.

Noticeboard

Cllr Coletta reported that planning permission for installing the noticeboard on Stane Street (footpath 45) had been granted and three quotations obtained for consideration.

Community Safety Partnership

The Council considered joining the scheme and but decided against it whilst expressing an interest in still being informed.

Litter Pick

Turnout of volunteers in October was disappointing. Nonetheless, a lot of rubbish was collected. The councillors agreed that more robust signs for the litter pick should be obtained in the future.

Post Box At The Top Of Goose Lane By Woodside Green

Correspondence with Royal Mail and MP's Office had been received. Royal Mail declared that *they have been unable to identify a suitable location for installing a replacement post box.* The Council agreed this is not acceptable. Cllr Jackson provided information as to where the post box used to be with photos, all of which were emailed to MP's Office but he has not heard from Royal Mail. The Clerk will expedite.

Flitch Way Bench

The bench was installed in November and looks good

White Lining In The Car Park

Two quotations were received and discussed. The Council chose UK Potholes Ltd to carry out the works. The clerk will place an order and contact Essex Cllr Barker re applying for grant.

Christmas Lights Switch On

The event was well attended.

Essex County Council Love Your Bus Initiative

The Council discussed possibilities and concluded there are no issues other than buses being punctual and actually running.

UDC Local Plan Modifications

It was retrospectively agreed to send to UDC the Great Hallingbury Parish Council's comments with regards to the new local plan modifications.

Parish Council Website

The current provider does not support gov.uk domains. The Council considered three competitive quotations and selected lomart.com which offered the best value for money but would require more work from the clerk.

The Council also decided to obtain a gov.uk web domain.

Drop Box

The Council chose to use a free version drop box for cloud storage of documents. The storage is limited so documents will be regularly monitored.

Precept

The precept for 2026 / 2027 was discussed and it was proposed to raise it by £1,500.00 which was agreed in principle.

Planning

Application No.//Site and Development//Decision (the Council's comments are shown in brackets)

Application Decisions

UTT/25/1332/OP // Alpenrose, Bedlars Green // Outline application with all matters reserved except appearance and scale for demolition of existing dwelling and erection of four dwellings // Approved (GHPC raised concerns enumerated in previous issues).

UTT/25/0895/OP // Victoria Park, New Barn Lane // Outline application with all matters reserved except access for the partial demolition of the existing dwelling and the removal of the tractor store, shed and other structures on the site and the erection of two detached dormer bungalows // Refused (Objections: it is in the Green Belt, so could be considered a threat to the conservation area and already on a road with speeding traffic which is highly dangerous due to the slightly curved nature of the road with trees/vegetation growing along both sides of it.)

UTT/25/1451/FUL // Barnmead, Start Hill, Stane Street // S73 application to remove conditions 6 (Residential Travel Pack) and 10 (Construction Method Statement) of UTT/21/2337/FUL (Conversion of garages from plots 2-5 into living accommodation and adding a room in the roof of plots 2 and 3 (amendment to previously approved application No. UTT/18/1982/FUL).) // Approved (Objections previously published) UTT/25/1542/FUL and reconsultation // London Stansted Airport, Bassingbourn

Road // Airfield works comprising two new taxiway links to the existing runway (Rapid Access Taxiway and Rapid Exit Taxiway) to enable continued airfield operations of 274,000 aircraft movements and an increase in passenger throughput from 43 million terminal passengers to up to 51 million terminal passengers, in a twelve month calendar period // Awaiting decision (Objections previously published)

UTT/25/0931/FUL // ATM Start Hill, Stane Street // Proposed side extension to the existing sales building // Approved (Objections previously published)

UTT/25/1922/HHF // Highfield, Church Road // Single storey rear extension to replace the existing conservatory, two storey front extension, erection of a side cart lodge, rear first floor extension, bay windows to be altered, rear dormer to be rebuilt along with new pv panels on the flat roof and changes to the fenestration // Approved (No objections.)

UTT/25/1854/FUL // Cranwellian, The Street, Takeley // Removal of all existing structures, foundations, internal fences, poles and manege materials, drainage pipes, chambers and tanks, adaption of the existing site access and the erection of six residential dwellings with associated infrastructure. (Objections: Although this development falls into the Parish of Takeley it borders Great Hallingbury Parish. Objections previously published)

UTT/25/1854/FUL // Cranwellian, The Street, Takeley // Re- Consultation // Awaiting decision

UTT/25/2116/HHF // Fairview, Bedlars Green // Alterations and single storey rear extension // Approved (No objections.)

UTT/25/2108/OP // Land at Howletts, The Street // Outline application, with all matters reserved except for access for one detached self build dwelling using existing access // Unknown (No objections.)

UTT/25/2106/FUL // Unit 8 Stansted Distribution Centre, Start Hill // Erection of two condenser units to rear of property //

Approved (No objections as long as it does not cause noise to those living in vicinity.) UTT/25/2131/HHF // Old Elm, Tilekiln Green // Single storey rear extension // Refused (No objections.)

UTT/25/2132/LB // Old Elm, Tilekiln Green // Single storey rear extension // Refused (No objections.)

UTT/25/2147/FUL // Land North of The Gatehouse, The Street // Erection of two detached dwelling houses and related works including upgraded access, parking, amenity areas and landscaping (alternative to approved scheme at Appeal under application UTT/23/1878/FUL)// Approved (No objections.)

Not asked officially:

UTT/25/2181/OP // Land at Camps Field Lower Road, Little Hallingbury // Outline planning application, with all matters reserved (except for principal access), for the demolition of existing structures and erection of up to 59 dwellings, including affordable housing, associated green and hard infrastructure, public open space, biodiversity enhancements and principal access off Lower Road. // (As a neighbouring Parish we would like to point out that this development will curate more access traffic through our village and as such we oppose it.) // Awaiting decision

UTT/25/2589/CLE // Harlow Agricultural Merchants Ltd, Latchmore Bank // Certificate of lawfulness for the change of use of the land from agricultural/commercial to a sui generis use in association with an arable merchants, equine supplies, domestic pet supplies and rider/outdoor living clothing business and operational development.// Refused (No comments to send to UDC.)

UTT/25/2590/FUL // The Hop Poles, Bedlars Green // S73 application to vary condition 2 (approved plans) of UTT/24/1370/FUL (Conversion and change of use from public house to one residential dwelling and proposed erection of cartlodge. Proposed construction of one self-build dwelling in existing car park.) - alterations to external

materials, removal of existing external render to original brickwork beneath // Awaiting decision (No objections)

UTT/25/2634/LB // The Hop Poles, Bedlars Green // Application to vary condition 2 (approved plans) of UTT/24/1371/LB (Conversion of public house to residential including alterations to listed building.) alterations to external materials, removal of existing external render to original brickwork beneath // Awaiting decision (No objections.)

UTT/25/2591/FUL // Land Adjacent 10 Start Hill // Erection of five dwelling houses // Awaiting decision (For information: the land falls within the Public Safety Zones Policy AIR7 and the policy AIR6 Strategic Landscape Areas.)

UTT/25/2795/HHF // Street Barn, The Street // Proposed rear extension, new windows, garage conversion, new retaining wall and associated internal alterations // Refused (No objections.)

UTT/25/2796/LB // Street Barn, The Street // Proposed rear extension, new windows, garage conversion, new retaining wall and associated internal alterations // Refused (No objections.)

UTT/25/2842/FUL // Start House, Tilekiln Green // S73 application to vary condition 2 (approved plans) of UTT/25/0702/FUL (application to vary condition 2 of UTT/23/2352/FUL approved under appeal ref APP/C1570/W/24/3351924) to make changes to internal layout and external elevations // Approved (No objections.)

UTT/25/2747/HHF // Wallwood, Woodside Green // Demolition of existing outbuilding and erection of replacement outbuilding // Refused (No objections if it remains an outbuilding and it is not turned into dwelling.)

UTT/25/2748/LB // Wallwood, Woodside Green // Demolition of existing outbuilding // Approved (No objections if it remains an outbuilding and it is not turned into dwelling.)

UTT/25/2877/DFO // Alpenrose, Bedlars

Green // Details following outline application UTT/25/1332/OP for demolition of existing dwelling and erection of four dwellings - details of layout, access and landscape

(Concerns because of the following points:

1. The original planning permission given when Alpenrose was built was for one bungalow only, with an access point 8ft wide.

2. This access from the site was allowed as an 'easement' across National Trust land onto Beggars Hall Lane, which is a private road (also a footpath). This is the only access, and none exist direct to the main road which begins approximately where the noticeboard is situated.

3. How are they going to join up to the main utilities when access is over private land?

4. This makes this a defective planning application due to the fact that there is no access to a public highway. Ref.: ECC document dated 13th December 2006 RECORDS/HB/49993/L.3G.

5. The site is not suitable for four properties including the fact that it would not be able to cope with the number of vehicles around the green that it would generate.

The Council also request that all development vehicles must take place within the site boundary and must not park outside the development area. Work must only take place from 8 am to 5 pm and not weekends because it is a residential area)

Applications Dealt with at Meeting:

Not asked officially but as the planning application below affects Great Hallingbury the Council agreed to send comments to UDC.

UTT/25/2786/OP // Land North of Taylors Farm, The Street, Takeley // Outline application with all matters reserved except access for commercial development of mixed employment including offices and/or industrial processes and/or general industrial and/or storage and distribution (Use Classes E(g)(i) and/or E(g)(iii) and/or B2 and/or B8 with any ancillary office floorspace) and/or a Mobility and Amenity

Hub comprising retail food/beverage use (Use Class E(b)) and/or office (Use Class E(g) (i)) and/or a public transport interchange (Sui Generis), and access works, strategic landscaping, infrastructure and other associated works (Great Hallingbury Parish Council stands firmly by its objections on 06 February 2025 as part of the Scoping Opinion of this planning application and previous comments to screening Opinion UTT/24/2682/SCO all previously published. As part of this planning application, we see no evidence that our concerns have been addressed. The Parish Council has made extensive additional comments for which there is insufficient space in this publication but they may be obtained from the Clerk.

UTT/25/3006/FUL // The Old Forge, Woodside Green // S73 application to vary condition 2 (approved plans) of UTT/24/2714/FUL (Conversion and change of use of garages to form tourist accommodation.) - Changes to layout and fenestration of previously approved drawings (No objections.)

UTT/25/3007/FUL // The Old Forge, Woodside Green // S73 to vary condition 2 (approved plans) of UTT/25/1130/FUL (Conversion and change of use of garages to form tourist accommodation) - Changes to layout and fenestration of previously approved drawings (No objections.)

UTT/25/2857/HHF // Wood End, Bedlars Green // Part single, part double storey rear extension, enlargement of rear dormer and front dormer. (No objections.)

UTT/25/3239/HHF // Silver Birches, Church Road // Creation of a new vehicular access to the existing driveway, including a dropped kerb and associated surfacing works. (No objections.)

UTT/25/3348/LB // Wallwood, Woodside Green // Re-roofing of main house (No objections)

Rubbish Bins

The number of rubbish bins at Blossom View has increased including two yellow ones. The clerk to inform enforcement.

Bedlars Green Pond

The trees at the Bedlars Green pond need attention. Cllr Bloom suggested perhaps the Council should get a contractor to do this and it was agreed for him to obtain quotations.

Bedlars Green

There are constant parking issues as people are visiting National Trust land. It was proposed to discuss this with the National Trust and the clerk will contact them to arrange meeting on site.

BBC One's "Sort Your Life Out"

This programme is returning in 2026 and is looking for households across the UK where clutter has taken over daily life.

The show sees Stacey Solomon and her team help families declutter, reorganise, and transform their homes in just one week.

Has life made your home harder to manage? Do you feel your home needs to change but don't know where to start?



The Adoption Agency

A married couple, Jim and Josephine, owned their own circus and one day they walked into an Adoption Agency.



Naturally, they explained their circumstances to the social worker.

The social worker looked a little puzzled. "Are you sure that a travelling circus is the best environment in which to bring up a young child?" he asked. "I mean, all those dangerous animals and constantly being on the road?"

"The animals are all well trained," Josephine responded, "and we have a state-of-the-art, sixty-foot motor home, with every comfort necessary."

"But how would you educate the child?" asked the social worker.

"We've arranged a tutor," said Jim. "He'll teach all the regular academic subjects as well as Spanish and computer programming."

"And we'll have a nanny," Josephine added quickly. "She's certified in pediatric care and child welfare and nutrition."

The social worker had listened carefully and he was impressed.

"Well, you really do seem like an ideal couple," he said. "What age of child did you have in mind?"



"It doesn't really matter," said Jim, "as long as they're small enough to fit in the cannon."

British Legion Poppy Appeal 2025



The support for the Appeal last year was again excellent in the Hallingburys. Thanks to our local Poppy Morning taking £670, over £1,100 has been raised for this appeal - once more the best villages in the local area.

With house to house collections phased out, we now rely on local shops and pubs to display a box and this year they were all supported really well. Both Howe Green House and Little Hallingbury School gave great support, particularly as half term coincided with half of the campaign.

Our local organiser is still trying to retire but with no one in the area offering to take over she continues to supply everything the village organisers need for a successful campaign. It is a lot of work and I hope our area will continue to support her and the Appeal.

Thank you to all those who contributed and for the continuing support for this cause which does such excellent work for servicemen and their families.

Gill Sewell

Coordinator for Great & Little Hallingbury

Great Hallingbury Community



Don't forget to check our Community website for information on the village and its surroundings. You may also be interested in the activities mentioned.

Essex County Council Elections

7th May, 2026 - Boundary Changes



You will recall that elections for Essex County Council should have been held in 2025. However, the Government postponed them as the county is advancing towards a new system of local government which will be:

- an elected mayor for Greater Essex to embrace the areas currently covered by Essex County Council, Southend and Thurrock unitary authorities
- three, four or five new unitary authorities to cover the whole county
- the abolition of all the current town and district councils

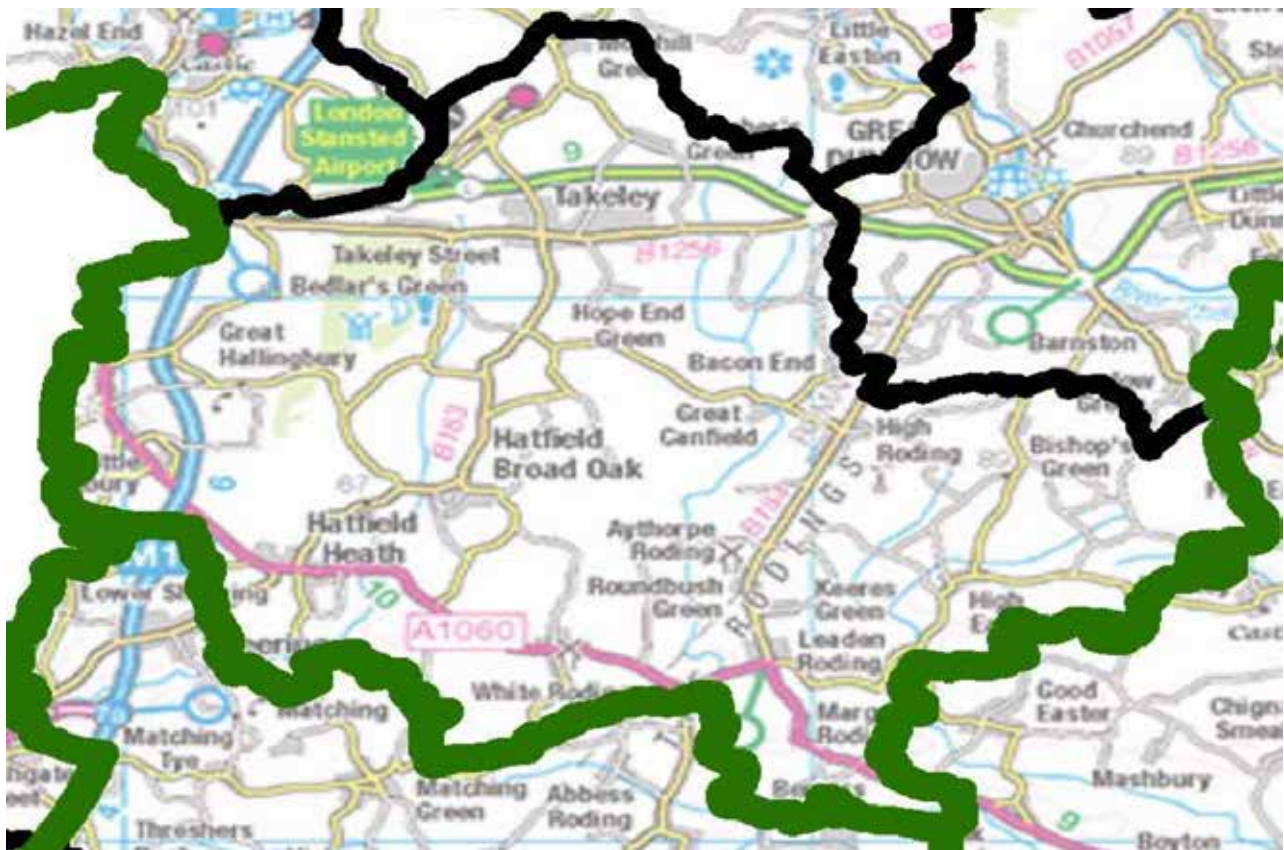
The mayoral election was scheduled for May this year but has been postponed by the Government until May 2028.

Essex has submitted proposals for the establishment of unitary authorities but the Government has yet to determine which of the proposed options it will select.

The Government offered to existing local authorities who are preparing for local government reorganisation the chance to delay the 2026 elections but Essex County Council has declined the offer and our elections will proceed on 7th May this year.

Meanwhile, the Local Government Boundary Commission for England has been fulfilling its legal obligations and reviewing boundaries. The Commission has agreed that Uttlesford should have five county divisions and a new division would be established at the next election which is now 2026.

Great Hallingbury has for some time been within the Dunmow division which, with the new housing built in that town, has a considerably increased number of electors. Therefore we will now be part of the Takeley Division which is described in the this map.



LEARN HOW TO DRAW & PAINT

For all abilities!

Drawing & Painting

Workshops

Private Art Sessions

Arty Parties



Book via the website!
Great Hallingbury Art Studio
M: 07788 577448
E: info@thearthouseoasis.com

www.thearthouseoasis.com

MOB: 07516 783138
GRANGE
GROUNDS
MAINTENANCE



- Grass Cutting
- Hedge Cutting
- Fencing
- Turfing
- Patio & Driveway
- Cleaning Grounds
- Maintenance Contracts
- Garden Clearances

Contact Will Grange – 07516783138

Or Email

Grangegroundsmaintenance@gmail.com




novuscare

Care in the heart of your own home

Are you or an elderly loved one looking for extra care and support at home in **Great Hallingbury or the surrounding areas?** Then our local carers are here to help.

Novus Care is regulated by the Care Quality Commission and can provide a qualified carer to support your loved one in their own home from just **30 mins per week to full-time live-in care.**

For more information or to arrange a **FREE** assessment, please call: 01268 960285 or email: hello@novus-care.com

www.novus-care.com

Book Corner



Book Corner

The Frozen People

by Ellie Griffiths

Some murders can't be solved in just one life-time! Ali Dawson and her *cold-case* team investigate crimes so old, they're frozen - or so their inside joke goes. What most people don't know is that the Cold Case Unit can travel back in time to complete their research. (Yes, yet another book that requires you to *Suspend your disbelief!*)

The latest assignment sees Ali venture back to London in the 1850's, further than they have dared previously. She has been tasked with investigating a cold case involving Isaac Templeton, an MP who wants to clear the name of his great- great- grandfather, Cain Templeton, who was accused of murder. At this time, rumours in London suggested that Cain is part of a sinister group called *The Collectors* - to become a member you had to have killed a woman. (To complicate matters even more, Ali's son, Finn, works for Isaac Templeton and she's not allowed to let Finn know the details of the investigation - or anything else!).

Having successfully travelled back in time, (appropriately dressed), she finds her way to a house owned by Templeton, who lets it out to artists for little or no rent, and climbs to the top floor. In the attic room she sees a woman lying on the floor with a pool of blood slowly congealing around her head - and a man who looks a lot like Isaac Templeton!.....

Meanwhile, back in the 21st century, Finn has become entangled in a murder investigation involving Isaac Templeton's death! And, before long, it is Finn who is charged with the murder of his boss. Can Ali solve a murder-mystery in both centuries?



The Reluctant Fundamentalist

by Mohsin Hamid

Plot, characters, *setting the scene* descriptions and a satisfying conclusion all play their part in most books - not this one! And it ends in such an ambiguous and unresolved way!

The whole story is told solely from the point of view of Changez, who comes from the Pakistan city of Lahore but is an immaculate speaker of English. It's not a book of direct action but there is a feeling all the time that *something* is hovering.

It begins when Changez approaches an American sitting at one of the cafes in the *Old City* part of Lahore. In perfect English, he asks, *Excuse me, sir, but may I be of any assistance? Ah, I see I have alarmed you. Do not be frightened of my beard. I am a lover of America.*

Changez explains that he lived there for many years, beginning with a scholarship at Princeton and then going on to secure a very well-paid job in business. Every so often though, he interrupts his account of life in America with more personal comments to the American: *You prefer that seat with your back to the wall?.....and will you not remove your jacket? So formal!* What's going on here?

The entire one-sided conversation takes place over several hours - during which we learn not only the facts of Changez's life in America but also of his struggles, successes and thoughts during that time. By now, it is dark and the American wishes to go back to his hotel. Changez insists on walking with him - with the waiter following. As they arrive at the hotel, with the waiter rapidly closing in, Changez says, *It is here that you and I will part company.* A glint of metal is revealed as the American reaches into his jacket.....



Jan Baldwin

The Demise of Hallingbury Place: Continuing the Story

Researching local history is often compared to solving a jigsaw puzzle because both require assembling scattered fragments to reveal a cohesive picture. Just as a puzzle consists of individual pieces, local history is made up of scattered fragments like letters, maps, newspaper articles, oral traditions and artefacts. The historian tries to discover how one fragment connects to others to build a composite picture. Of course, unlike a jigsaw puzzle, the historian lacks a reference image - there is no *picture on the box* to give guidance. The historical *puzzle* is also different in that it can never be completed. It is an *unending* process. There is always some new information that may come to light to add to the *final image*.



Over the last few years members of the Great Hallingbury History Society have been focusing on the sale of Hallingbury Place in the 1920s and its subsequent destruction. A lot of new information has been discovered; for instance, there was not just one *sale of the century*, but five different sales relating to the Hallingbury Estate. It might have been thought that there was nothing else to be learned about the demise and destruction of Hallingbury Place but

recently new information has come to light through an email sent from a Swedish Professor to Christine Coultrup, Chairman of the Great Hallingbury History Society.

The email was as follows:

Dear Team

Please forgive me for bothering you with my request. I'm conducting historical research into the life of Bishop Hugh Embling OBE. He became the Bishop of Korea in 1926 but, in August and October 1924, he has an address given as *The Remains, Great Hallingbury* which is large enough to have a lake with fishing rights.

The *Remains* seems to be perhaps a youth camp of some sort but I can't find a reference to it on the internet. Can you help? Was this a short lived Christian youth project perhaps?

John Eric Chaplin PhD. Assoc. Prof. University of Gothenburg

I had been aware of the existence of a farm colony for boys in Great Hallingbury in the mid 1920s, organised by Rev'd Hugh Embling. In the March Parish Magazine last year there had appeared the following newspaper article from one hundred years ago.

The Saffron Walden Weekly News (13th March, 1925) reported that Sydney Taylor, a 16 year old youth from the Farm Colony in Great Hallingbury, had been summoned to the Stansted Police Court for stealing 1s 9d from the Village Institute, Ugley. The defendant answered the description of a boy seen about the Institute on the day the money was stolen. A witness said the defendant had admitted taking the money. In reply to the Chairman, the witness said that most boys at the farm were homeless and had nowhere else to go. The boys came and went as they pleased. Mr W Shaw, Superintendent of the Farm Colony at Great Hallingbury which was organised by Rev'd Hugh Embling, said the defendant gave them no trouble and his character was good. The Chairman of the Court, addressing the defendant, said they wanted to give him

a chance and he would be bound over. If he came before them again, he would be punished.

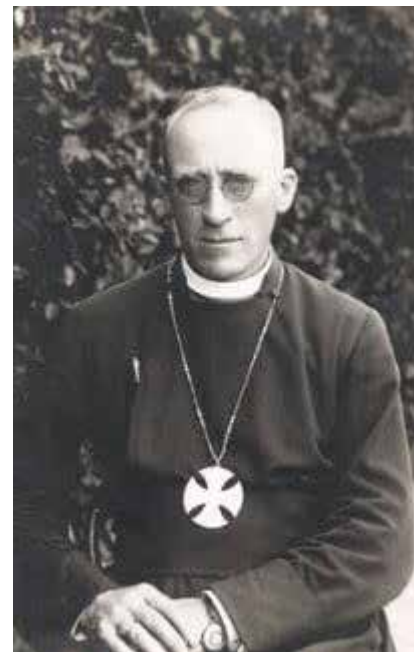
What was not clear about this Farm Colony was where it had been sited in Great Hallingbury, but the email from the Swedish Professor gave some indication as attached to it were two newspaper articles from 1924.

The first article from the **Essex Newsman** (25th October, 1924) reported that Sidney Herbert Corn, from Greys Inn Road, London, had been summoned for stealing a bicycle, value of £18, the property of Revd. Hugh Embling, The Remains, Great Hallingbury. The defendant pleaded guilty to the theft of a bicycle and said that he had been turned away from *The Remains* and, having no money, had taken the bicycle to get home. The second article from the **Chelmsford Chronicle** (15th August, 1924) reported that Ernest Lewis, of Church End, Great Hallingbury, had been summoned for *unlawfully taking fish in water on land, the property of Hugh Embling at Great Hallingbury, on Sunday, 3rd August*. A witness said he had found the defendant fishing with a fish eight and a half inches long on the bank. The witness ordered the fish to be thrown back into the lake. The witness was *troubled with continual trespassing. People seemed to think this place was part of the public forest*. The defendant, who said he was out of work, was fined. A man in the court paid the fine.

Having read the two newspaper articles, both Christine and myself immediately agreed that *The Remains* must refer to *Hallingbury Place* which had been demolished during 1924. On 15th and 16th April, 2024, the fabric of the building and the fixtures and fittings of *Hallingbury Place* were put up for sale, prior to demolition, which was to take place within twelve months. Was the Farm Colony sited in the Old Stable Block, later converted into residential accommodation? The fishing lake must refer to Morley Pond in the grounds of *Hallingbury Place*. Morley Pond was considered by Lady Alice Houblon (1907) to have been *originally made for the purpose of preserving fish for use on feast days*.

But what do we know about Rev'd Hugh Embling and why did he set up a farm colony in the *remains of Hallingbury Place*. Did he have any links with the Hallingburys?

Hugh John Embling was born on 20th January, 1886, in Headington, Oxford. He studied at Lincoln College, Oxford and, in 1913, he was the Missioner at the Charterhouse Mission in Southwark. The Charterhouse Mission was a charity founded in 1885 by Old Carthusians (former pupils of Charterhouse School) to support disadvantaged young people in the borough. The Missioner was helped in his parish work, especially in running clubs for men and boys, by volunteers from Charterhouse School. Hugh Embling served as a Royal Navy Chaplain on board HMS Agincourt during the Battle of Jutland. He left the navy in 1920 and continued his work with youth groups, working at Liddon House in London. In 1923 he was involved in organising a Farm Colony in Chaddleworth, Newbury and in 1926 became Assistant Bishop of Korea. Having served in Asia for ten years, he returned to England, moving to Hull where he set up a summer camp on the estate of Lord Middleton for young people from the slum area in Hull. Hugh Embling died on the 1st June 1965 in British Columbia, Canada, where he is buried.



continued on next page

continued from previous page

Hugh Embling's links with the Charterhouse Mission immediately help to explain his links with the Hallingburys. Charterhouse is the patron of St Mary's Church, Little Hallingbury, and since 1929 all deceased Brothers of the Charterhouse have been buried in a special section of the churchyard of St Mary's. Hugh Embling must have been aware of the demolition of *Hallingbury Place* in 1924 and set up a Farm Colony in *The Remains* of the great house for disadvantaged young boys from London.

There is a final newspaper reference to *Hallingbury Place* in 1924. Under the heading *Extract from our files: 100 Years Ago*, *The Essex Chronicle* (3rd October, 1924) reported on the celebrations held in September 1824 in *Hallingbury Place* to celebrate the 21st Birthday of John Archer-Houblon, the future Victorian Lord of the Manor (1803-1891). *Morning was ushered in by the ringing of the parish bells; the large cask of ale brewed on the birth of the heir apparent was tapped at nine o'clock; the entire poor of the parish received individually a pound of beef, a loaf of bread and a pint of ale. The numerous tenantry were entertained with good old fashioned English hospitality at the noble mansion where they enjoyed themselves till a late hour and then departed, highly gratified at the fresh mark of kindness and attention shown to them by their worthy and much respected landlord.*

The noble mansion dominated life in the Hallingburys for the next 100 years. It was still providing limited *hospitality* for homeless boys from London even after the great house had been destroyed. An email from a Swedish professor has continued the *unending process* of researching the history of the **Great House of Hallingbury**.

Philip Hays

Quiz Questions



1. What's the oldest continuously inhabited city in the world?
2. Which planet is closest to the sun?
3. Only queen wasps survive the winter. True or false?
4. What is the largest organ of the human body?
5. How many seasons of *Game of Thrones* aired?
6. How many years was *Genie* stuck in the lamp before Aladdin found him?
7. Which fruit did many people in the Western world think was poisonous until 1820?
8. Who performed the first solo flight across the Atlantic Ocean?
9. Which U.S. president considered funding an expedition to the center of the Earth?
10. How many words can dogs understand?
11. Who was the first woman ever inducted into the Rock & Roll Hall of Fame?
12. What was Taylor Swift's first Billboard Hot 100 No. 1 song?
13. Hedgehogs and dormice are the only UK mammals that hibernate. True or false?
14. Where did Prince William and Kate Middleton first meet?
15. What was the first Pixar movie?
16. Some birds stand on one leg to keep warm. True or false?
17. What was the name of the first manned mission to land on the moon?
18. Who is the only member of One Direction to win a Grammy?

Answers on page 30

Great Hallingbury Village Hall



The Vital Village Amenity

Hear about our progress

The Annual General Meeting of the Great Hallingbury Village Hall Committee and Trustees will be held on

Wednesday, 29th April, 2026

at 7 pm at the Village Hall

All villagers on the Electoral Register may vote at the meeting and all villagers are invited to attend.



Then please join the Committee for a glass of wine and nibbles

Great Hallingbury Village Hall



SPRING QUIZ NIGHT

Raising funds to improve the Village Hall

Saturday, 18th April, 2026

Great Hallingbury Village Hall

7 pm for 7.30 pm start

GOOD PRIZES AND RAFFLE

£5 per person at the door
tables of 6 or 8 or join another group

Bring your own food and drink

Reserve from Lee (07500 805281)

Have another convivial evening Support the Village Hall

Great Hallingbury Village Hall

Table Top Sale

Sunday 28th June 2026

sellers from 8am public 9am-12 noon

CAFÉ



Spring is a time to de-clutter!

Items that are no good to you, may be just what someone else is looking for. So, gather all your goods and grab a table at our Table Top Sale.

Tables can be reserved at a cost of £10 by contacting Lee Cox at cox_l3@sky.com

All proceeds to Village Hall

THE
FORGOTTEN GARDENS OF
EASTON LODGE

March is usually a gorgeous month in the Gardens - with warm sunny days bursting the leaf buds on the shrubs and trees and bringing out the first blossom on the peaches, nectarines and apricots. There are daffodils everywhere - early tête-a-tête providing a blast of colour and then a succession of many other varieties, historic and modern. Bumble bees forage and brimstone and peacock butterflies flit around.

After the snowdrop season in February, we sometimes have Group Visits in March but we typically don't fully re-open until the beginning of April. So volunteers are focussed on preparations - some more spring pruning and moving of plants in the herbaceous borders; tidying; and the first planting of veg - broad beans, carrots and beetroot. Volunteers spring clean the history and information building so that the archives can be enjoyed again by the first main season visitors.

We love to welcome new volunteers in March as it is such a pretty season for showing them around and there is lots of work pending. Thursday is our main gardening

and maintenance day for volunteering, while some volunteers work on Mondays, Wednesdays or Saturdays. And our Sunday Open Days rely on volunteers too - for catering and other front of house duties. So, if you like Gardens and being outdoors and fancy volunteering, please do get in touch. If you wish to arrange a Group Visit or start volunteering, you can contact us through our website or directly by emailing enquiries@eastonlodge.co.uk .

Jill Goldsmith



Flight Catering

400 passengers but only 200 meals were loaded



onto a flight from Delhi to New York City. It was only discovered after take off when the flight attendants started going through their preparations for the meals.

So, the airline had bungled and the crew was in a fix. However, one smart flight attendant had an idea.

A couple of hours into the flight she nervously announced, "Ladies and

gentleman. We don't know how this happened, but we have over 400 people on board but only 200 dinners. Anyone who is kind enough to give up their meal to someone else will receive unlimited free liquor for the duration of the flight!"

Her next announcement came six hours later. "Ladies and gentlemen. If anyone wants to change their mind, we still have 180 dinners available."



Essex Police

New Year Message from Uttlesford District Commander



This past year, our team has focused on community engagement - being visible, available and ready to listen to your local concerns. We will continue this commitment in the new year.

Neighbourhood Policing Teams have grown and together we've achieved big successes - burglary, vehicle crime and violent crime offences are down compared to the previous year. This has been possible thanks to extra patrols in high-risk areas, crime prevention advice for residents and using community intelligence to identify and stop offenders.

We've also given out more free DNA marking kits, focussing on rural communities. Over 90 farms have been visited by the team with crime prevention advice shared.

Speeding continues to be a key concern for many of our communities. To address this, we've conducted more than 100 speed checks throughout 2025, working closely with and supporting our dedicated Community Speed Watch volunteers.

Thank you for your support throughout the year. Have a safe and enjoyable New Year.



Hare Coursing

Hare coursing continues to be a key priority for the team. Officers have been conducting regular patrols across identified hotspot areas using recent call data to guide where resources are focused. By reviewing reports and community intelligence, we're able to target our patrols more effectively and provide a visible presence in the areas most affected.

Protect your Home and Belongings

Most burglars are opportunists, aiming to grab as many valuable items as possible in

the shortest time. They often target small, easily portable items that can be hidden in their pockets.

A common target is jewellery in bedrooms which often holds sentimental value and is irreplaceable.



Simply hiding these items in a drawer or wardrobe isn't enough, as these are usually the first spots burglars check. Consider fitting a Secured by Design approved domestic safe in your home to improve security and protect these valuables.

Ensure you instal strong locks, security lights and always lock your doors and windows, even if you are just stepping out for a minute.



Stolen Number Plates

Did you know stolen number plates are often used to hide vehicles involved in crimes or to avoid paying tolls and parking fees? Keep your vehicle's number plate safe by using one-way clutch head screws to secure your plates and deter thieves.

Protect Your Identity

Destroy, and preferably shred, receipts with your card details on and post with your name and address on. Identity fraudsters don't need much information in order to be able to clone your identity.



Cruising

A cruise ship passes by a remote island and all the passengers see a bearded man running around and waving his arms wildly.



"Captain," one passenger asks, "who is that man over there?"

"I have no idea," the captain says, "but he goes nuts every year when we pass him."

Bench on Fritch Way

Most of you will be familiar with the Fritch Way which runs along the path of the old railway line from Bishop's Stortford to Braintree.

Great Hallingbury Parish Council has donated a bench which has now been installed by the Friends of Fritchway so walkers and riders may rest awhile and enjoy their surroundings.



Well done Great Hallingbury Parish Council.

Stephen's Gardening Service

All aspects of garden maintenance undertaken



grass cutting
pruning
hedge cutting
and more

jet washing
**steam cleaning of
patios, driveways and decking**



Tel: 07730 201664

Stephen is a long standing Great Hallingbury resident

Essex County Council



Dear Great Hallingbury Residents.

Essex Roads

Gritney Spears, Gritty Gritty Bang Bang and Plowie were all out and about in early January keeping over 2000 miles of the Essex Road Network clear of snow and ice as the temperatures fell. Essex' gritters cover around 40% of the strategic road network making sure that we can all get out and about to go to work, school or shop. There are 51 routes covered by 55 vehicles with two mini spreaders. 104 drivers are on standby for when they get the call.

You can read all about Essex' Winter service here at essexhighways.org/roads-and-pavements/winter-travel and, if you want to track the lorries in your area, then it's essexhighways.org/track-the-gritting-lorries. Alongside Essex' teams, many farmers also work to clear sites such as police stations, ambulance stations and workplaces when the temperature drops.

I am delighted that, in an independent review, Essex' Highways has been given a Green rating. <https://www.telegraph.co.uk/gift/c17e4870cd597097> has all the details.

Libraries

Other Essex Services go from strength to strength with the number of Libraries remaining at 74, the second largest Library Service in the Country. In the last year, Shenfield, Harwich and Colchester have reopened after rebuilding/ refurbishment.

Some of our larger Libraries run Dementia Cafes, have partnerships with UK Visa Office, Saffron Walden Building Society, Lloyds and Specsavers. A home Library service is also available. The larger libraries now have Blood Pressure machines and smaller ones have machines to borrow.

In 2024-2025 there were over 3.3m visits

to our Libraries with over 3.8m items being borrowed. We hold some 1.884m books and other items.

Environment

Essex' environmental team has been busy too and in the 2024-2025 year they facilitated the planting of some 63,000 whips, of which 7% were in Uttlesford, some 4,419. Thanks need to go to Parishes and Landowners who helped make this happen.

Great Hallingbury

Locally I have escalated a number of potholes reported to me along the main road through the village. I have also allocated some of my grant money to projects in the village. The first of these is for works to trees in the Churchyard and the second to much needed repair and relining at the Village Hall Car Park.

Elections

County Council elections, postponed from last year, seem to be proceeding so I will be out and about visiting as many of you as possible. I hope to meet many of you but, if I don't, you know you can contact me at any time. Always happy to try to help.

Cllr Susan Barker

cllr.susan.barker@essex.gov.uk

Fat Free French Fries

A boy read a restaurant sign that advertised fat-free French fries.



"Sounds great," said the health-conscious boy. He ordered some. He watched as the cook pulled a basket of fries from the fryer. The potatoes were dripping with oil when the cook put them into the container.

"Wait a minute," the boy said. "Those don't look fat-free."

"Sure they are," the cook said.

"We charge only for the potatoes."

Cammas Hall

FAIRYTALE EASTER TRAIL



OPEN FROM
31ST MARCH
UNTIL
12TH APRIL
10AM - 5PM
 'CLOSED ON MONDAYS'

MEET FAIRY TALE
CHARACTERS

MAGICAL EXPERIENCE FOR
CHILDREN

PLENTY OF PHOTO
OPPORTUNITIES

PLAY AREA AND FUN
GAMES TO PLAY

CHECK OUT OUR WEBSITE FOR MORE DETAILS.
CAMMASHALL.CO.UK

The Physiotherapist

JULIE HERBERT MCSP BSc (Hons) MAACP

Associate NATALIE HILLIARD MCSP BSc (Hons)

The Street Barn Clinic, The Street, Great Hallingbury, CM22 7QR

Telephone or Text: 07712 230391

Book Online at www.thephysiotherapist.net

**Treatment for all your joint and
muscle pain from head to foot**

**Treatment for any neurological conditions, including
Parkinson's, Stroke, MS, ME and Long Covid**

SPORTS INJURIES RSI • HEADACHES • KNEES • BACK PAIN
NECK PAIN • TENNIS ELBOW • PRE & POST OPERATIVE REHAB
SHOULDER PAIN • ARTHRITIS etc.

Daytime and evening appointments available

www.thephysiotherapist.net

Little Hallingbury Cricket Club



The colts under 13s and under 11s have been playing in the Herts & Essex CCC indoor league during the winter. The standard is very high and the under 13s did well to compete at this level.

The under 11s, captained by Jake Nulty, exceeded expectations, winning more matches than losing. Sisters Evie and Millie Shea made useful contributions to wins.

We start the club's indoor practice at Leventhorpe School on Sunday, 1st February, with nets for seniors from 2 to 4pm and colts nets, with an ECB cricket coach, from 3 to 4pm. The outdoor season starts with the first game on Sunday, 26th April, at Little Easton. League fixtures start Saturday, 2nd May.

Keith Behagg



Salmon Talk

Two young salmon are swimming along one day. As they do, they are passed by a wiser, older fish coming the other way. The wiser fish greets the two as he passes, saying, "Morning, boys! How's the water?"

The other two continue to swim in silence for a little while, until the first one turns to the other and asks, "What the hell is water?"

Great Hallingbury History Society



SPRING 2026



Fakes and Forgeries

by Tim Turner
**Wednesday,
11th March**



Royal Mail Coach Routes in East Anglia

by Hugh Feldman

Wednesday, 8th April

The Life and Works of William Morris

by Fiona Rose
**Wednesday,
13th May**



Meetings held in
Great Hallingbury Village Hall at 8pm

Entrance Fee Including Refreshments
£3 for Members Membership £10 pa
£5 for Non-members

EVERYONE IS WELCOME



More Busy Times with Hallingbury Ladies

A Tudor Christmas

Again there has been plenty of activity with Hallingbury Ladies during the Winter months. At our meeting in November our talk *A Tudor Christmas* was given by Louise Reed. As this is our last evening meeting of the year we usually begin our Christmas celebrations at this meeting. Over the years Louise has told us about famous historical characters and dressed up as Royalty to give us a flavour of the person. This time she gave us an interesting insight into several different festive customs during Tudor times. A fun evening with our competition for a Christmas decoration made from a ball attracting several entries.

Wreath Making

On the following day we had a Wreathmaking morning led by Anne, one of our members. This has become a yearly event and thirteen of us had a very enjoyable morning making lovely winter wreaths for the Festive Season. It helps that we can gather a lot of our greenery from our own and our neighbours' gardens.



Christmas Party

Following on from our 2024 first try at a Christmas party, we decided that we would have a day time party in early December again. Delicious food and drink was

provided by the members and of course there was a lot of chatter! Carole read out the hilarious story for the Left Right game and many of us ended up winning a prize. This was followed by a special Christmas raffle organized by the committee with some lovely prizes.



Most members joined in the Secret Santa. Lesley thanked everyone for the food and for making it such an enjoyable afternoon.

New Year Meal

In January twenty six of us enjoyed a special evening meal at The Three Willows in Birchanger. This was a different kind of venue for us but they are able to accommodate larger numbers and the food is freshly cooked and hot. Lesley welcomed everyone and the new calendar of events for the year was circulated with other member information. There was a lot of talking and a lovely raffle with half of the money taken being donated to St Clare's Hospice, which will be our Charity for the year. What a good start to the 2026.

Activities

Our final activity of the year was a visit, arranged by Jan, for twelve of us to go to Southmill Arts to see *Anything Goes*, performed by BSMTTC. It was a very wet, dank evening but we were able to forget that for over two hours when we became involved in the story and music of this very entertaining musical. We were all humming the tunes for days afterwards!

Our final monthly lunch for the year was in November when thirteen members went to Bretts Farm Restaurant. With the popularity of these lunches we sometimes find it difficult to find a venue for the number of attendees but fortunately Bretts is not one of these. The Lunches resume again in February.



Lunch at Brett's Farm

Monthly Groups

The Walking Group has managed to meet throughout the winter months, carefully avoiding the wet days! For the November walk everyone went to Avis's yard, from whence they started. They then walked in glorious weather to the Dukes Head in Hatfield Broad Oak for some liquid refreshment.

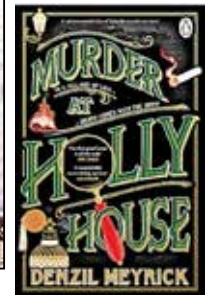
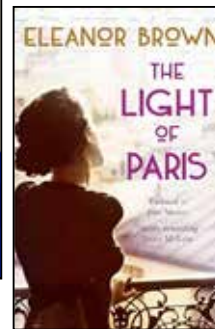


December Walk

They also managed to pick a fine day in December when the group met in Pig Lane and walked along the river bank to Spellbrook. Although it was not raining on the chosen day in late January, it was rather dull and damp and it was too muddy for the planned walk in the forest so the group went along The Flich Way to Takeley and back to the Thremhall Café for some sustenance afterwards.

The **Literary Ladies** continue to meet every four weeks. We have had the group long enough now for everyone to have had a chance to choose a book. This has meant we

have read books in several different genres and certainly several that we would not have picked up normally. Our discussions are very interesting and it is surprising to hear other members' take on a book. It is good that no one is loath to give their opinion. During these three months we have read some very different books: *Intermezzo*, *The Light of Paris* and *Murder at Holly House*. Our meetings are always fun and enjoyable.



Knit and Natter members continue to meet at Hunters Meet. In November our meeting was more Natter than Knit with tea and cake for those who were able to attend. December was too busy for everyone to be there so we gave it a miss until January. At the meeting in January we discussed plans for Charity Knitting this year as well as small items for presents and various annual events.

Looking forwards

Our Speaker in February is Suzy Conolly who will be giving us an illustrated talk about her walk from Lands End to John O'Groats which she did in Memory of her father, Geoff Morris, last year. In March, Brian Carline will tell us about *Tripe and Trotters!* April is our Annual Meeting and we will also be finding out about CPR and Defib Essentials.

We meet at 7.30 pm in Great Hallingbury Village Hall on the fourth Wednesday in the month. Visitors are always welcome to give us a try - especially our refreshments which are delicious - so come along and meet us as well as enjoying some tasty eats.

Gill Sewell, Secretary
marjorierosegs@hotmail.com

Recycling and Waste News



Uttlesford Switches Fuel

All UDC diesel vehicles for essential services - including waste collections lorries and grounds maintenance vans - are now running on hydro-treated vegetable oil (HVO). The fuel is produced entirely from waste oils rather than new crops. The change is expected to cut the council's carbon emissions in frontline services by around 34%, making it one of the most significant environmental improvements made to our day-to-day operations.

Recycle your old electricals

Don't forget that you can recycle small items with your weekly kerbside bin collections in Uttlesford. Simply leave electrical items such as hairdryers, toasters and kettles in a carrier bag on top of the bin when you put out your bins on the usual collection day. Please make sure to remove any batteries or bulbs.

Larger electrical items such as washing machines and televisions can be dropped off at local recycling centres or book a bulky household waste collection

Make your period sustainable

Whether you're ready to switch completely or just want to try them alongside disposables, reusable period products can be a great option.

- they can save you money - using menstrual cups can cost around £70 for a lifetime of periods
- they can be worn for up to 12 hours, depending on your flow
- they reduce the amount of waste you throw away
- they absorb up to the equivalent of four tampons

Love Your Period is an award-winning Essex campaign that offers information and guidance on reusable period products to help you make your own informed choice.

Save up to £1,000 by Switching to Cloth Nappies

More and more Essex parents are using cloth nappies - and there are many reasons to give them a try. They can save you money and also help protect the environment.

Essex County Council is offering a £30 refund on the purchase of any cloth nappies, including new or pre-loved cloth ones.

Use of Landfill in Essex Ends Ahead of Schedule

Essex County Council has confirmed that landfill use for residual waste ended on 1st October, more than two years ahead of the statutory 2028 deadline. This shift is driven by a new £1bn waste treatment contract and marks a major change in how waste from the county will be processed.

Find More Information

More information on these and other topics may be found on the Uttlesford website <https://www.uttlesford.gov.uk/>

Quiz Answers

Answers to questions on page 20



1. Jericho
2. Mercury
3. True
4. The skin
5. Eight
6. 10,000 years
7. Tomatoes
8. Charles Lindbergh
9. John Quincy Adams
10. More than 150
11. Aretha Franklin
12. We Are Never Ever Getting Back Together
13. False
14. The University of St. Andrews
15. Toy Story
16. True
17. Apollo 11
18. Harry Styles

Great Hallingbury - A Hidden History

The history of the village is overshadowed by the disappearance of the great house.

There are other dwellings that have receded into oblivion with little record they ever existed. There was a house that was left derelict when the motorway was built on the left hand side of the old A120, right by the entrance to the roundabout. It was finally demolished with the extension of said roundabout years later.

A more interesting property was Norwich Farm. It seems inconceivable today that any house could be removed, let alone a farm, because it was deemed unnecessary. One can see on the map from the early 1800's, that Norwich farm lay on a road from Bedlars Green to Takeley, on the edge of the forest where the badgers are now the only residents. No clear date can be found for it becoming unused but it ceased to be on maps in the 1900's. Some ruins were still there in the 1950's but these were removed during the government backed land improvement schemes of that period.

Although the bricks are gone a human record still remains. The census of 1851 lists six dwellings, of which two were unoccupied, containing three families - The Piggotts, the Archers and the Birds. Altogether there was a total of sixteen people - seven adults, all listed as agricultural labourers, and nine children. All of the adults were in their 40's or 50's and were born locally. The Harps Farm listing contains a record of a servant named Bird, almost certainly another member of that family.

The 1851 census is a demographic snapshot of what life was like all those years ago.

Alan Pinnock



The same map shows how small Bishop's Stortford was at the time!



Electrical & Locksmith

"Local, reliable, qualified & insured"

Call: **07775 725 748** Email: glenn@stortelectrical.co.uk

Discounted rates for Hallingbury Residents!
(because I live here too!)

www.stortelectrical.co.uk

www.stortlocksmith.co.uk

Electrical Services:

- Lighting Upgrades, repairs, replacements
- Outside power
- Extractor Fans
- Alarms, CCTV & Home Automation
- EICRs (Electrical Installation Condition Reports)
- Rewires & Repairs
- Fault Finding & Problem Solving
- Electric Garage doors, gates etc.

Locksmith Services:

- Lock Repair, Replacement & Upgrades
- Key Cutting (we come to you - most keys £5)
- Lockouts
- Door and Window Mechanism repair or replacement
- Door alignment and problem solving

DANIEL ROBINSON & SONS

Independent Family Funeral Directors & Monumental Masons



- A professional, caring, 24 hour service
- Arrangements in the comfort of your own home, if preferred
- Private Chapel of Rest
- Pre-payment Plans
- Fleet of air conditioned limousines & horse drawn funerals
- Free bereavement counselling

79/81 South Street
BISHOP'S STORTFORD
01279 655477

www.drobinson.co.uk

*Dedicated to serving our
local community*

Bullfields
SAWBRIDGEWORTH
01279 722476

District News

Uttlesford District Council has received the inspectors' final report which concludes the examination of Uttlesford's proposed Local Plan.



The new Local Plan sets out where new development should go over the next 15 years and replaces the current plan, which dates back to 2005. Updating it is essential to ensure growth is well planned, sustainable and aligned with national planning requirements.

In their report, the independently appointed inspectors confirm that, with some recommended changes known as *main modifications*, the plan is sound, legally compliant and ready for adoption. This is a notable milestone in the plan-making process and provides a clear and legally binding framework for managing development, protecting the environment and ensuring the right infrastructure is provided in the right places.

The new plan, including the recommended changes, will now move through the council's formal decision-making process. It will be considered by the Local Plan Panel, then Cabinet, before being presented to Full Council for a final decision on adoption in March.

The inspectors' final report is available to view on the council's website: www.uttlesford.gov.uk/new-local-plane

*Parallel lines have so much in common.
It's a shame they'll never meet.*

Great Hallingbury Litter Pick Cancellation



The Parish Council has decided to cancel the March 2026 litter pick, not only due to the lack of support but also to protect the safety of our volunteer pickers.

There have been a few occasions when there have been near misses from speeding vehicles and also abuse hurled out of the windows of passing motorists. We have tried to get the police involved more often to secure the safety of our volunteers but, due to other commitments, they are not always available.

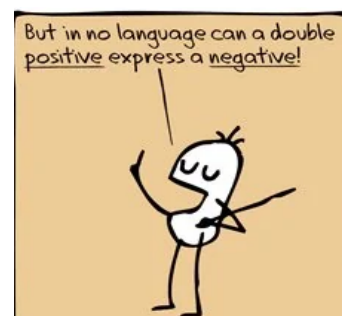
We have not taken the decision lightly and it saddens us to cancel our biannual event to keep our lovely village clean and tidy. There will be more litter picks and we will just have to find away to encourage more volunteers and to make it safer to carry out

The Double Negative

A linguistics professor was lecturing his class the other day.

"In English," he said, "A double negative forms a positive. However, in some languages, such as Russian, a double negative remains a negative. But there isn't a single language, not one, in which a double positive can express a negative."

After a pause, a voice from the back of the room said,
"Yeah, right."



Essex Outdoors

Harlow High Adventure

Discover two exciting, pay and play, outdoor climbing activities at Harlow High Adventure. Providing fun for all the family or just the kids in a safe environment with a coffee shop onsite.

Events are run in 90-minute sessions. Friendly experienced instructors will ensure that you safely get the best from your adventure.

High Ropes Hexagon

The exhilarating Hexagon features twelve fun obstacles including balance beams, swinging barrels and cargo nets, with four easier elements to help you find your feet. You can challenge yourself to move higher as your confidence builds or, if you are an adrenaline seeker, whizz all the way through. Whatever your capability you will be sure to have a lot of fun!



Cross the wobbly rope bridge or, if you're feeling brave, the tightrope across the wires and face the challenge of the 12-metre high Hexagon.

This adventure will start with a 15-minute safety talk by our experienced instructors and your harnesses will be safely fitted ready for you to take to the skies. Children can go on alone or with adults for a family adventure. A parent supervisor must remain onsite at all times. Maximum of 12 spaces available per 90-minute session.

You should measure a minimum of 180cm from your feet to the tips of your fingers with your arms stretched straight upwards above your head.

Climbing Wall Adventure

Anyone aged six and above can enjoy the superb new outdoor climbing wall adventure. Safe, fun, and easy to access, with five different challenges to test your climbing skills to the limit. Supervised by our friendly instructors who will keep you safe and entertained.



Towering at 12m high, race to the top before abseiling back down. Maximum of 10 climbers per 90-minute session. (No height restriction).

*Essex Outdoors Harlow, Burnt Mill Lane,
Harlow, Essex, CM20 2QS
Tel - 01279 620270*



Two children ordered their mother to stay in bed one Mother's Day morning.

As she lay there looking forward to breakfast in bed, the smell of bacon floated up from the kitchen. But after a good long wait she finally went downstairs to investigate.

She found them both sitting at the table eating bacon and eggs. "As a surprise for Mother's Day," one explained, "we decided to cook our own breakfast."

Easter

The Moveable Feast

Easter is the most important movable feast in Christianity. But how is the date determined each year?

How Is Easter Determined?

Easter falls on the first Sunday after the Full Moon date, based on mathematical calculations, that falls on or after March 21st. If the Full Moon is on a Sunday, Easter is celebrated on the following Sunday.

Although Easter is liturgically related to the beginning of spring in the Northern Hemisphere (March equinox) and the Full Moon, its date is not based on the actual astronomical date of either event.

March 21st is the Church's date of the March equinox, established by The Council of Nicaea (325 A.D.), regardless of the time zone, while the actual date of the equinox varies between March 19th and March 22nd and the date depends on the time zone.

The date of the Paschal Full Moon, used to determine the date of Easter, is based on mathematical approximations following a 19-year cycle called the Metonic cycle. Both dates may coincide with the dates of the astronomical events, but in some years, they don't.

For instance, if the Full Moon date in March specified by the Church's lunar calendar, also called the ecclesiastical Full Moon, falls before March 20th, then the Easter date is based on the next ecclesiastical Full Moon, in April.

Earliest and Latest Easter Dates

According to the Metonic cycle, the Paschal Full Moon falls on a recurring sequence of nineteen dates ranging from March 21st to April 18th. Since Easter happens on the Sunday following the Paschal Full Moon, it can fall on any date between March 22nd and April 25th. (*Note: this applies only to years 1753-2400*).

This year the Paschal Full Moon will be on April 2nd, making Easter on April 5th.

Services in the Hallingburys

March - May 2026

G = St Giles' M = St Mary's

* venue to be advised - please see website

G	Mar 1	9 am	Holy Communion
M	Mar 8	11 am	Morning Worship
G	Mar 15	11 am	Morning Worship Mothering Sunday
M	Mar 22	11 am	Holy Communion
*	Mar 29	11 am	Six Villages Service Palm Sunday
*	Apr 2	tba	Maundy Thursday
*	Apr 3	tba	Good Friday
G	Apr 5	9 am	Holy Communion Easter Day
M	Apr 12	11 am	Morning Worship
G	Apr 19	11 am	Morning Worship
M	Apr 26	11 am	Holy Communion
G	May 3	9 am	Holy Communion
M	May 10	11 am	Morning Worship
G	May 17	11 am	Morning Worship
M	May 24	11 am	Holy Communion Pentecost
*	May 31	11 am	Six Villages Service Trinity Sunday

Please Note:

The patterns of worship in the Six Villages Churches are currently under review. Consequently, the forward schedule of services may be subject to change and you are advised to check our website at www.thesixvillages.org for the most up-to-date and accurate information.

The website has details of all services taking place across the Six Villages, and information about special events, our contact details and how to get involved.



Great Hallingbury Annual Parish Meeting

will be held in the Village Hall on

Monday, 16th March, 2026, at 8 p.m.

All residents are welcome to attend to hear what has been happening over the past year with the Parish Council and our local societies.



Then join us for 'Cheese & Wine' afterwards.

Calendar

March 2026

- 1 Library Van - Bedlars Green 13.45 - 14.15
- 2 Great Hallingbury Parish Council - Village Hall 8 pm
- 3 District Councillors' Surgery - Village Hall 2 - 4 pm
- 11 History Society - *Fakes and Forgeries* - Village Hall at 8 pm
- 16 Annual Parish Meeting - Village Hall at 8 pm
- 25 Hallingbury Ladies - *Tripe and Trotters* - Village Hall at 7.30 pm
- 22 Library Van - Bedlars Green 13.45 - 14.15

April 2026

- 7 District Councillors' Surgery - Village Hall 2 - 4 pm
- 8 History Society - *Royal Mail Coach Routes in East Anglia* - Village Hall at 8 pm
- 12 Library Van - Bedlars Green 13.45 - 14.15
- 18 Village Hall Spring Quiz - Village Hall at 7 pm for 7.30 pm start
- 22 Hallingbury Ladies Annual Meeting - *CPR & Defib Essentials* - Village Hall at 7.30 pm
- 29 Village Hall AGM - Village Hall at 7 pm

May 2026

- 3 Library Van - Bedlars Green 13.45 - 14.15
- 5 District Councillors' Surgery - Village Hall 2 - 4 pm
- 7 Essex County Council Elections
- 11 Great Hallingbury Parish Council - Village Hall 8 pm
- 13 History Society - *The Life and Work of William Morris* - Village Hall at 8 pm
- 24 Library Van - Bedlars Green 13.45 - 14.15
- 27 Hallingbury Ladies - *Getting to Know You* - Village Hall at 7.30 pm

Come to the next Parish Council meetings - ask your questions - give your views. See how the Parish Council works for you.
 Monday, 2nd March 8 pm Village Hall
 Monday, 11th May (tbc) 8 pm Village Hall

**Annual Parish Meeting
 Monday, 16th March**

see above