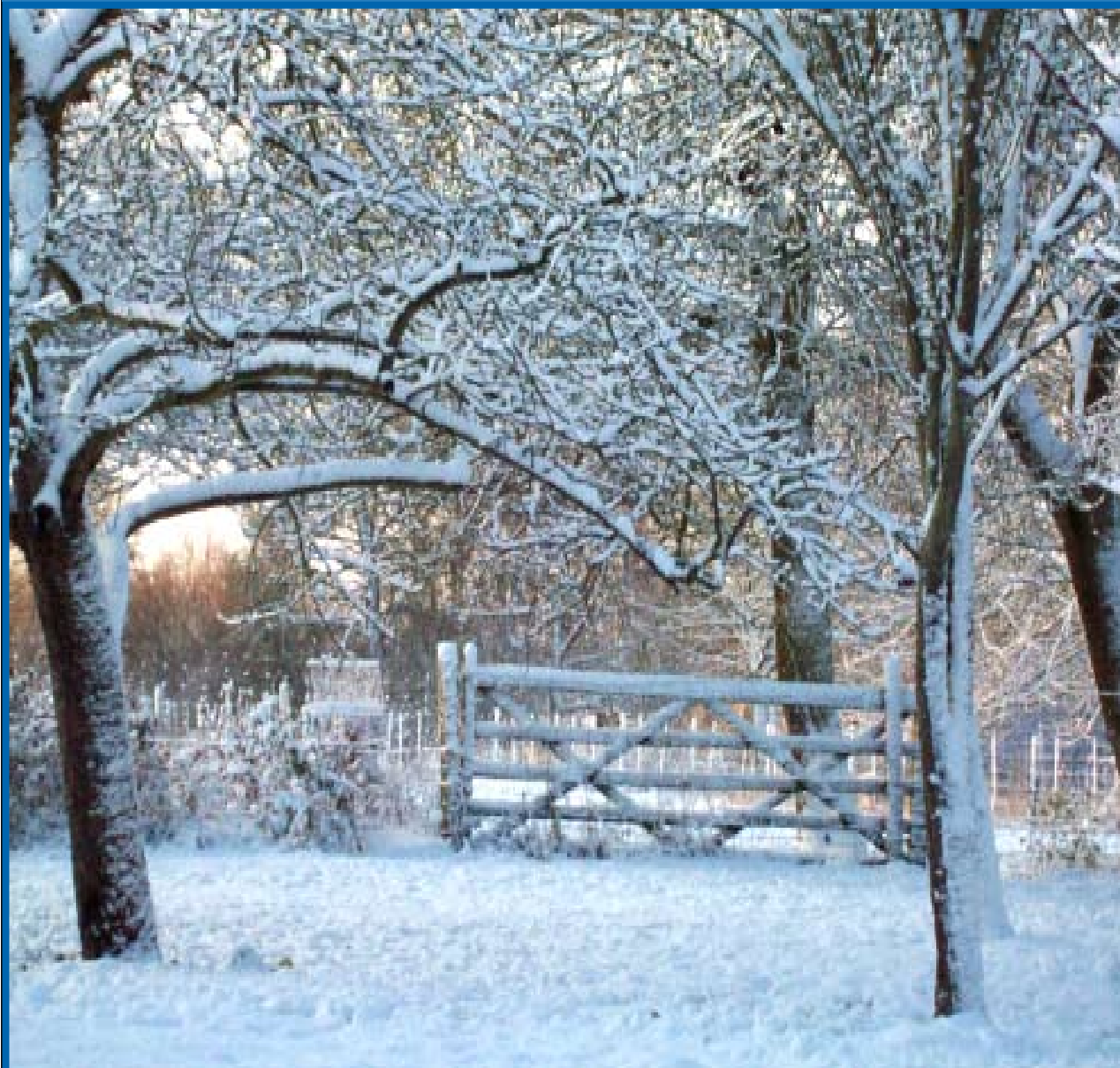


Great Hallingbury Highlights

Winter 2025

Vol. 108

An independent publication giving news on matters affecting Great Hallingbury



Winter in Great Hallingbury

Photograph courtesy of David Barlow

Councillors

Parish Council Chairman:

Mr. Alan Townsend Tel: 465790
7 The Grove, CM22 7TT
email: ajt1952@btinternet.com

Parish Council Vice-Chairman:

Mr. Mark Coletta
email: cllrcolettapc@gmail.com

Parish Councillors:

Mr. David Barlow Tel: 657182
128, Bedlars Green, CM22 7TL

Mr. Mark Bloomfield Tel: 501679
The Old Post Office, Bedlars Green, CM22 7TP
email: bloomfieldmotors30@yahoo.co.uk

Dr Neil Jackson Tel: 654983
Monksway, Woodside Green, CM22 7UU
email: njackson57@btinternet.com 07801 431645

Mr. Andrew Noble Tel: 832837
Lewismead, Tilekiln Green, CM22 7TQ
email: agnoble@aol.com

Mr. Alan Pinnock
128A Bedlars Green, CM22 7TL Tel: 659071
alanpinnock@hotmail.com Mobile: 07939 603507

Mrs Val Waring Tel: 07979 450871
email: val@valwaring.co.uk

Clerk to the Parish Council:

Mrs. Urška Sydee Tel: 07432 297142
48 The Forest, Hatfield Broad Oak, CM22 7BT
email: greathallingburypc@outlook.com

Website:

<https://e-voice.org.uk/great-hallingbury-parish-council>

Uttlesford District Councillors

Mr. Geof Driscoll
email: cllrdriscoll@uttlesford.gov.uk

Mr. Neil Reeve
email: cllrreeve@uttlesford.gov.uk

Essex County Councillor

Mrs. Susan Barker Tel: 01245 231250
Little Garnetts, Bishops Green, Barnston, Essex,
CM6 1NF Fax 01245 231810
email: cllr.susan.barker@essex.gov.uk

Member of Parliament

Mr Chris Vince MP
House of Commons, London SW1A 0AA
email: chris.vince.mp@parliament.uk

Contacts for Village Activities

Bridge on Sundays

Organiser Christine Coultrup
bridgeonsunday@gmail.com 01279 655144

Cricket Club

Keith Behagg 01371 872550

Hallingbury Ladies

Secretary Gill Sewell 01279 504990
marjorierosegs@hotmail.com

History Society

Secretary; Claire Layer
gthallhistory@gmail.com 07776 936721

Neighbourhood Watch

Coordinator Mark Coletta
cllrcolettapc@gmail.com

Neighbours' Association

Chair Diane Conway
Dianeeconway@aol.com 07712 225085

Poppy Appeal

Coordinator Gill Sewell 01279 504990
marjorierosegs@hotmail.com

St. Giles' Church

Priest in Charge: Rev'd Sophie Weller
Benefine Administrator: Alison Uncle
administrator@thesixvillages.org 07934 260978

Scouting Associations

Sally Bentley 01279 902710

Village Hall

Bookings: Sarah Cox 07544 921459
gthallvillagehall@gmail.com

Venture 85 - short term loan of mobility aids, etc
Monica Swann 01279 653820



I used to sell security alarms door to door, and I was really good at it.

If no one was home, I would just leave a brochure on the kitchen table.

Editorial

Meters

Many of you no doubt already have a smart meter on your power supply and now Affinity Water will be installing smart water meters through the village.

There are definite advantages with smart meters - metering allows more accurate billing and the provider saves the cost of sending out meter readers whilst you don't have to get involved accessing the meter and sending in the readings. You also have the opportunity, if you wish, to track your usage in real time.

However, some people have been concerned that the ability to track one's usage of utilities could give too much of an insight into your life. In general, my own response has been, *who would bother?* But the advent of quantum computers that could analyse data at enormous speeds would, perhaps, make this more of a possibility. But why should someone want to do so?

Then one reads reports that the Chinese have been harvesting data, including personal data, that they can decode in the future and maybe things get a bit more unsettling and you start thinking about a dystopian future. A more likely problem will be trying to get to talk to someone to correct a computer error, so fears of dystopia are probably not too likely.

Festivals

We are now in a season of festivals such as Hannukah, Diwali, worldwide celebrations of the winter solstice and, of course, Christmas. I do hope to see you all when the lights are first lit on the Christmas Tree at the Village Hall. This will be on Saturday, 29th November, at 6.30 pm. Then we can all enjoy mulled wine, sausage rolls and mince pies in the Village Hall with sweets for the children, followed by a social evening together. It is especially nice to have something in Great Hallingbury that is just ours.

Greetings

I hope you have enjoyed another year of **Great Hallingbury Highlights**. We send you many good wishes for your winter celebrations and may the New Year be good to us all.

Editor



CONTENTS

2	- Details of Councillors and Village Contacts
3	- Editorial
4	- History Society
4-5	- Essex Police
5	- Hallingbury Pantomime
7-8	- District News
9	- Cricket Club
10-11	- Hallingbury Ladies
12	- Easton Lodge
13	- Hidden History of Great Hallingbury
15	- Essex County Council - Free Blood Pressure Checks
16-17	- View from the Cab
19	- Fly-tipping
20	- Stansted Airport Sound Insulation Grant Scheme
21	- Book Corner
22	- Hundred Parishes
23-25	- Parish Council
26	- Easy Eating
27	- Village Hall
29	- Chairman's Report
30	- Essex Wellbeing Service - Poppy Appeal 2025
31	- St Mary's Christmas Tree Festival - Church Services in the Hallingburys
32	- Christmas Tree Lights Switch On - Calendar

Great Hallingbury History Society



EARLY 2026



A Ramble Down Nineteenth Century Lanes

by Bill Hardy

Wednesday, 11th February



Fakes and Forgeries

by Tim Turner

Wednesday, 11th March

We do not meet in December or January

Meetings held in
Great Hallingbury Village Hall at 8pm

Entrance Fee Including Refreshments

£3 for Members Membership £10 pa
£5 for Non-members

EVERYONE IS WELCOME

Essex Police

News and Advice

*Extracts from Essex Police's
Weekly Dispatch*



E-Scooters

In recent weeks, neighbourhood officers have seized three privately owned e-scooters.

We'd like to remind residents of the current UK laws on e-scooters. It's not currently possible to get insurance for privately owned e-scooters. This means it is



illegal to use them on the road or in public spaces such as parks, street pavements and shopping centres.

If you use a privately-owned e-scooter in public, you risk the vehicle being seized under S.165 Road Traffic Act 1988 for having no insurance. If you cause serious harm to another person whilst riding an e-scooter, the incident will be investigated in the same way it would if you were riding a motorcycle or driving a car.

Could you be the missing puzzle piece we're looking for?

We know that information held by our communities can help us to keep people safe and catch criminals. We also know that our communities need to trust that we will listen to them and take action when we need to do.

Thanks to valuable intelligence from local residents and the dedicated efforts of our neighbourhood policing team, officers successfully recovered a vehicle in Saffron Walden that posed a potential risk to the community. The vehicle in question had no insurance, was registered as off-road and had no registered keeper – all indicators that it may have been used as a so-called *pool car*. These types of vehicles are often utilised by individuals involved in criminal activity to avoid being directly linked to offences, making them a common tool in the facilitation of illegal behaviour.

By acting swiftly on the information provided, officers were able to locate and remove the vehicle from circulation, helping to reduce the risk to the public and disrupt potential criminal use. This is a great example of how community intelligence, combined with proactive policing, can make a real difference in keeping our streets safer.

If you see or hear something that doesn't seem right or causes you concern, we want you to tell us about it. Submit a report on our website or report 100% anonymously to the independent charity, Crime Stoppers.

We encourage residents to report suspicious activity – your information helps us take meaningful action.

Check Your Security Cameras

As the nights get longer and spider season creeps in... If you're thinking about investing in CCTV or a doorbell camera - or already have - here's a quick tip from your Neighbourhood Policing Team. Please check your cameras regularly for spider webs, dust and debris. We've got plenty of footage in our archive featuring close-ups of cobwebs and curious spiders - not quite the evidence we were hoping for! A quick clean now and then helps ensure your footage is clear and useful should you ever need it. Stay safe, stay vigilant and keep those lenses spider-free!

Prove Ownership of Your Valuables

Ownership over property can sometimes be difficult to determine. Should the worst happen and your items are stolen, by marking or registering your valuables there can be no dispute over who owns them when they are recovered.

You should consider marking any item that is of value to you, either financially or sentimentally. Key items to consider are:

- Electronics - TVs, laptops, mobile phones, games consoles, music devices.
- Equipment - tools, bikes and other sporting equipment.
- Valuables - watches, bags or ornaments

1,000 more crimes solved in last year

Essex Police solved over 22,200 offences in the year to July - 999 more than the previous year - while crime fell by nearly 8,000 reported offences.



Chief Constable Harrington said:

There's a myth that we've been too distracted to deal with 'real crime'... These figures show quite the opposite.

Key achievements include:

- 10% increase in charges
- 90+ drug lines dismantled
- 340 years in prison sentences
- 4,000+ violent crime charges
- Vehicle thefts solved more than doubled
- Shop theft resolutions up 25%

My officers are relentless in their focus, tireless in their effort and determined in their approach.

Good News!

BOX OFFICE OPENS 1ST NOVEMBER!



Presents

ROBIN HOOD

Little Hallingbury Village Hall
29th - 31st January 2026 at 7.30pm
Matinee 31st January at 2pm

£10 Adults / £8 Concessions

Box Office

www.ticketsource.co.uk/hallingburypanto



SCAN FOR TICKETS!

DANIEL ROBINSON & SONS

Independent Family Funeral Directors & Monumental Masons



- A professional, caring, 24 hour service
- Arrangements in the comfort of your own home, if preferred
- Private Chapel of Rest
- Pre-payment Plans
- Fleet of air conditioned limousines & horse drawn funerals
- Free bereavement counselling

79/81 South Street
BISHOP'S STORTFORD
01279 655477

www.drobinson.co.uk
*Dedicated to serving our
local community*

Bullfields
SAWBRIDGEWORTH
01279 722476



SEASONED HARDWOOD LOGS

SMALL BAGS (APPROX. 25KG) £8.50

METRE-CUBED BAGS (APPROX. 600KG) £140.00

YOU CAN COLLECT A MINIMUM OF THREE SMALL BAGS FROM THE FARM OFFICE
LOCATED IN THE MAIN YARD AT CAMMAS HALL FARM . PLEASE RING AHEAD TO ARRANGE COLLECTION. WE
CAN DELIVER FREE OF CHARGE WITHIN THREE MILES OF THE FARM, UP TO FOUR MILES FOR A £5 CHARGE
OR UP TO FIVE MILES FOR A £10 CHARGE. THERE IS A MINIMUM ORDER OF 10 SMALL BAGS FOR DELIVERY

FOR FURTHER INFORMATION OR TO PLACE AN ORDER PLEASE EMAIL OFFICE@CAMMASHALL.CO.UK OR CALL
01279 718570 - CAMMAS HALL FARM, NEEDHAM GREEN, HATFIELD BROAD OAK, CM22 7JT

District News

Cllrs Geof Driscoll and Neil Reeve

Welcome to the winter edition of District News and may we wish all readers the best of health and enjoyment over the upcoming season.

We look forward to meeting you at events in the Parish, be it coffee mornings, Remembrance events or the lighting of the Christmas tree outside the Village Hall. And don't forget our Ward Surgeries - more information later.



Uttlesford District Council

Local Plan update

The online consultation on the emerging Local Plan and the implementation of CIL (Community Infrastructure Levy) closed on Monday, 27th October, 2025. As a resident in Uttlesford, we hope you had your say. For more information go to the UDC website: <https://www.uttlesford.gov.uk>

Local government reorganisation

Uttlesford District Councillors came together for an Extraordinary Council Meeting held in the Council Chamber in Saffron Walden on Tuesday, 23rd September, to discuss and vote on which of the four options for unitary authorities under consideration they thought would be in the best interests of residents in Uttlesford.

Cllr Lees (R4U), Leader of the Council, presented a report regarding the Submission of Proposals to Government regarding Local Government Reorganisation (LGR). She said it was important that the Council engaged with this process in order to shape the future of the area. The business reports - one for 5 Unitaries, two for 4 Unitaries and one for 3 Unitaries - were on the table.

She proposed her motion, as set out in the report prepared by UDC Officers, which endorsed Business Case A, the case for five unitary authorities across Greater Essex. Referring to the guidance around population

size for the new unitaries, she said that the numbers proposed for Business Case A were in keeping with existing unitary authorities across the country. Cllr Lees believed this model represented the best value in terms of true localism and democratic representation. Cllr Sell (Lib Dem) seconded the proposal.

The Chairman said notice of an amendment had been received and he called on Cllr Gooding (Conservative) to speak to the amendment, after which a recorded vote was called for by Cllr Gooding at the end of the debate. The amendment was defeated with a cross-party vote of 5 in favour, 24 against and 4 abstentions. There were 6 councillors absent from the meeting.

The Chairman then called for debate on the substantive motion. After the debate on the main motion, the Chairman put the substantive motion to a vote. This was approved with 24 votes in favour, 4 against and 5 abstentions.

The decision was ratified at Cabinet at a meeting directly following the ECM and was submitted to Government by the due date of 26th September, 2025. The council will be advised of the government's decision in March 2026.

You can find out more by searching *Local government reorganisation* on the UDC website <https://www.uttlesford.gov.uk>

Zero Carbon Communities Grant scheme

The Zero Carbon Communities Grant Fund is for funding to tackle the climate crisis. Applications may be made by community groups and parish and town councils, with grants of up to £10,000 available.

Projects might include, for example, energy conservation or efficiency measures in community buildings; nature and biodiversity projects such as community allotments or the restoration, creation or enhancement of a community nature area; or, perhaps, waste reduction projects or community initiatives that promote sustainable lifestyle choices.

You are welcome to apply for more than

one project. However, we are aiming to allocate funding so that we can support as wide a range of projects as possible across the district. <https://www.uttlesford.gov.uk/zero-carbon-communities-grant>

Parking, Transport and Streets

With Christmas fast approaching, find out about travelling within the Uttlesford District, where to park, our local footpaths and who looks after the streets.

You can find out where to park and how much it will cost, apply for season tickets, permits or pay a parking ticket (Penalty Charge Notice) when and how you need to pay using the following link <https://www.uttlesford.gov.uk/where-to-park-in-uttlesford>

Parking fine scam

Don't fall foul of a new text scam conning people into paying fake parking fines. UDC is warning anyone using their car parks and on-street parking not to respond to a text message stating that they have received a parking ticket. The text message is fake and is part of a national scam.

Hate Crime

Hate Crime is different to other types of crime because the offender is motivated by who the victim is or appears to be. Hate crime and incidents are acts that are motivated by hostility or prejudice based on a person's race, religion, sexual orientation, disability or transgender identity.

This includes crimes where the victim is targeted because of who they are or who they appear to be. You don't need to personally believe an incident is hate-related. It's enough if someone else, like a witness or a police officer, thinks it is.

It's important to report both hate crimes and hate incidents to help agencies address and prevent these acts.

For more information about hate crime, visit the Essex Police website. <https://www.essex.police.uk/search?q=Hate+Crime>

Safeguarding

Having mentioned Christmas earlier in this

edition of District News, the cold weather is no doubt on its way. Do you have neighbours who may need help during this period?

If your concern relates to:

Quality of care - read advice from the Care Quality Commission

Housing - contact the UDC housing team

Benefits or finances - contact the UDC benefits team

Access to health checks and emotional health and wellbeing support - read advice from the Essex Wellbeing Service

Ward Surgeries

Normal ward surgeries will take place on the first Tuesday of the month at Great Hallingbury Village Hall, between 2 - 4pm. The Little Hallingbury Village Hall surgery has been changed to the third Thursday of the month between 2 - 4pm. The afternoon surgery on 21st November 2025 will be held at the normal location and time, the Dukes Head PH, Hatfield Broad Oak, between 2 - 4pm.

And the usual reminder that, should you need to contact Neil or myself (Geof), you can email us on the following addresses.

cllrdriscoll@uttlesford.gov.uk

cllrreeve@uttlesford.gov.uk

Literally!

Teacher: What is the chemical formula for Water?

Johnny: H, I, J, K, L, M, N, O.

Teacher: What are you talking about?

Johnny: But yesterday you told us the formula was H to O!



Thinking laterally

Zak is an old farmer down on his luck. He's been struggling to maintain his farm on his own since his son, Jack, was sent to jail.

One day Zak writes to Jack in jail to let him know he's struggling and he writes the following:

Dear Jack,
I just wanted to let you know that this year I won't be able to plant potatoes in the field. I'm just getting too old now and I can't dig the field by myself. I know if you were here, you'd help me.

Naturally, Jack doesn't want his father to experience any more trouble, so he quickly writes a letter back to him.



Dear Dad,
Please don't even think about digging that field because that's where I buried the money I stole from the bank.

Well, when you're in prison the authorities read the content of your letters before they go out in the mail.

So, it's not long before the police show up at the farm and turn over the entire field in search of the stolen money. However, they don't find anything.

A couple of days later Zak receives another letter from his son.

Dear Dad,
Now the field's been dug over, you should be able to go ahead and plant the potatoes. That's the best I could do to help from here.

Little Hallingbury Cricket Club



The season ended with the Sunday team beating North Weald by 25 runs. A very young Sunday team ended up winning seven games; overall a good result with lots of young players contributing to the wins.

On Saturdays, the league team won seven of their last eight games and finished 2nd in the league. The batters on Saturdays enjoyed a good season with tons from Joe Appleby, Amit K, Paritosh, Stewart Goold, Joe Ash and Ollie Latham.

On 6th September, the club enjoyed a interclub match followed by a BBQ and award presentation.

Junior Cricketer: Thomas Wood
(photo right below)

Most Improved Junior: Ben Khorshidchehr
Young Player: Aarush Soni
(photo left below)

Most Improved Young Player: James Hutley
Club Member: Phil Rowley

Most Runs: Joe Ash

Most Wickets: Paritosh Maitil.

We have already started our indoor games with the under 11s and under 13s playing in the indoor league at HECC.

Keith Behagg





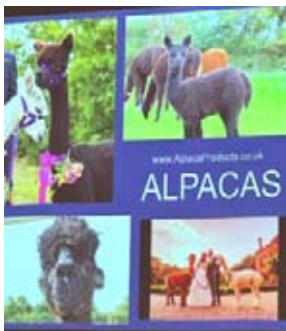
Splendid Summer Activities with Hallingbury Ladies

My Eventful Life

As usual there has been plenty of activity with Hallingbury Ladies during the Summer months. At our meeting in August our talk, *My Eventful Life*, was given by Suzu Clark. She told us about being a company director and award winning marketing/PR and fundraising expert, as well as her time bringing up three young children after early widowhood and how she gave up a high powered job in later life to look after her parents. She now works in London for a busy creative arts company. Her account was interspersed with her unique guitar playing and beautiful singing of popular songs when we were encouraged to join in. We were all uplifted by this invigorating evening.



All about Alpacas



In September we learnt all about Alpacas. Our speaker, Isabel (who was invited because, with her husband, she trims the toenails of one of our member's alpacas), explained the differences between Llamas and Alpacas. These range from their size, breeding habits and uses but apparently they all spit if they are angry! Alpaca wool is very strong and softer than Cashmere. Originally the Alpacas were white, sometimes having a pinky red tinge to their wool when sheared. Now they can be found in varying

shades of grey, brown, cream, rust and black. Their wool is very expensive, especially when it is produced in England. Isabel was an excellent speaker and we all enjoyed the interesting evening.

Painting Pumpkins

At our October meeting we painted pumpkins. Claire, with the help of Louisa, organized and ran the evening for us. To everyone's surprise we were not painting the actual pumpkins. Having drawn the pumpkin, water colours were used to create a wash, followed by other colours which blended in to the original wash, creating some lovely pumpkin paintings. Some were made into cards which continued the theme on the front. The results were quite beautiful.



A few of us used felt tip pens to create a patterned pumpkin. This enjoyable activity was followed by a delicious supper of sausages and baked potatoes with various fillings. There were several different seasonal crumbles for desert. A very enjoyable evening.

Activities

Our second activity of the summer was a visit to the Greyhound Racing in Harlow. Twenty one of us enjoyed an exciting evening, trying to find winners as well as working out which dog was the one we fancied! It was a great evening - apart from the cold chips!!

In early September nine of us found our way to Little Easton Manor for a delicious afternoon tea. It followed our visit in October last year and again it was the best some of us had tasted.

It was a shame there were not more of us but at least we were a small enough group to be able to hear everything that was being



talked about on the table!

Walks and Lunches

Our monthly lunches and walks continue.

In August the group walked across country to visit the Lock & Latte pop up café in Spellbrook again.



Unfortunately the September walk had to be cancelled due to the weather but in October the group walked, as planned, from Rosemary's house across country to the Dukes Head in Hatfield Broad Oak.



There were no lunches during August and September but they resumed again in October when fourteen of us gathered at the Nags Head for a very good meal. We look forward to more in the coming months.

Literary Ladies

This group continues to meet every four or five weeks. The chosen book in August

was *Dissolution* by C J Sansom and eleven of us met in Val's garden to discuss this on a beautiful day in August. We had a good discussion despite the planes!

We like to be topical and in September Carole chose *The Salt Path* which several of us had read a few years ago. It is surprising how your view of a book changes when there has been a lot of publicity about the truth of the story etc.

Finally the October book, which we will be discussing in November, is *Intermezzo* by Sally Rooney.

Knit and Natter

Members continue to meet at Hunters Meet. In August we invited other HALS members to come to lunch there with us which meant it was mostly Natter that day. In September, as our usual room was being used we were put in an outside self-contained room with all facilities and waitress service. Some of us started knitting items for the Poppy Coffee morning. It was back to normal in October.

Looking Forwards

In November our Speaker will tell us all about a Tudor Christmas. The next day we have organized a wreath making session in the Village Hall with Anne Bell. In December we have our only daytime meeting of the year when there will be a raffle, Secret Santa, Left Right Game and delicious buffet.

We meet at 7.30 pm in Great Hallingbury Village Hall on the fourth Wednesday in the month. Visitors are always welcome to give us a try - especially our refreshments which are delicious - so come along and meet us as well as enjoying some tasty eats.

Gill Sewell, Secretary
marjorierosegs@hotmail.com



THE FORGOTTEN GARDENS OF EASTON LODGE

News for Winter 2025

In November, we shut the Garden gate to visitors and our volunteers work on, enjoying the last autumn colours and the low rays of sunshine which make the trees and structures shine out and bring some warmth to the Italian Garden and walled kitchen garden. There are still a few flowers and fungi and we keep an eye out for the many signs of the birds, hares, badgers and deer that consider the Gardens as their home.



We start working through the planned list of autumn/winter jobs - maintenance jobs and the planting of bulbs, hedges and trees. We take joy from imagining how they will secure the Gardens' splendour and improve them for next season. And we hope for a good mix of rain and cold over the winter to replenish the ground water and to keep the bugs at bay.

Away from the Gardens, our Archivists have their own winter jobs. They intend to scan more of the historic photos we hold with a view to producing albums that visitors can browse. They also plan to do further research on the last Viscount Maynard's management of his estate - you can spot many of the houses he had built for local



people because of their M or Stag badges. We are keen



to find out to what extent his approach provided a model for his granddaughter when she took responsibility for the management of the estate as the Countess of Warwick.

We Trustees will be working on plans for future conservation projects. And volunteer, Gary, will deliver talks about the Countess of Warwick and her Gardens to local groups - if you wish to arrange for a talk, please contact us through the website or through the enquiries line: 01371 876979.

By January, our thoughts and work will be turning to preparation for the February snowdrop open days on Sunday 15th February, Thursday 19th February and Sunday 22nd February. It is a tense time as we hope for enough cold weather to stop the snowdrops flowering early and then nice sunny days in February to show the swathes of flowers at their best for visitors. Details will be on the website from the new year: www.eastonlodge.co.uk

Jill Goldsmith

No Brakes

Judge: How could you kill 24 people?
What the hell was wrong with you?

Driver: I was driving at 50mph when I saw two men crossing the road. On the roadside there was a restaurant with outside seating. I wanted to apply the brakes but I realised they were not working. So I had to take a decision: Either hit the two men or run into the restaurant.

Judge: Hit the two men of course!

Driver: Exactly! After hitting the first man, the other man ran inside the restaurant - so I followed him.



Hallingbury, A Hidden History

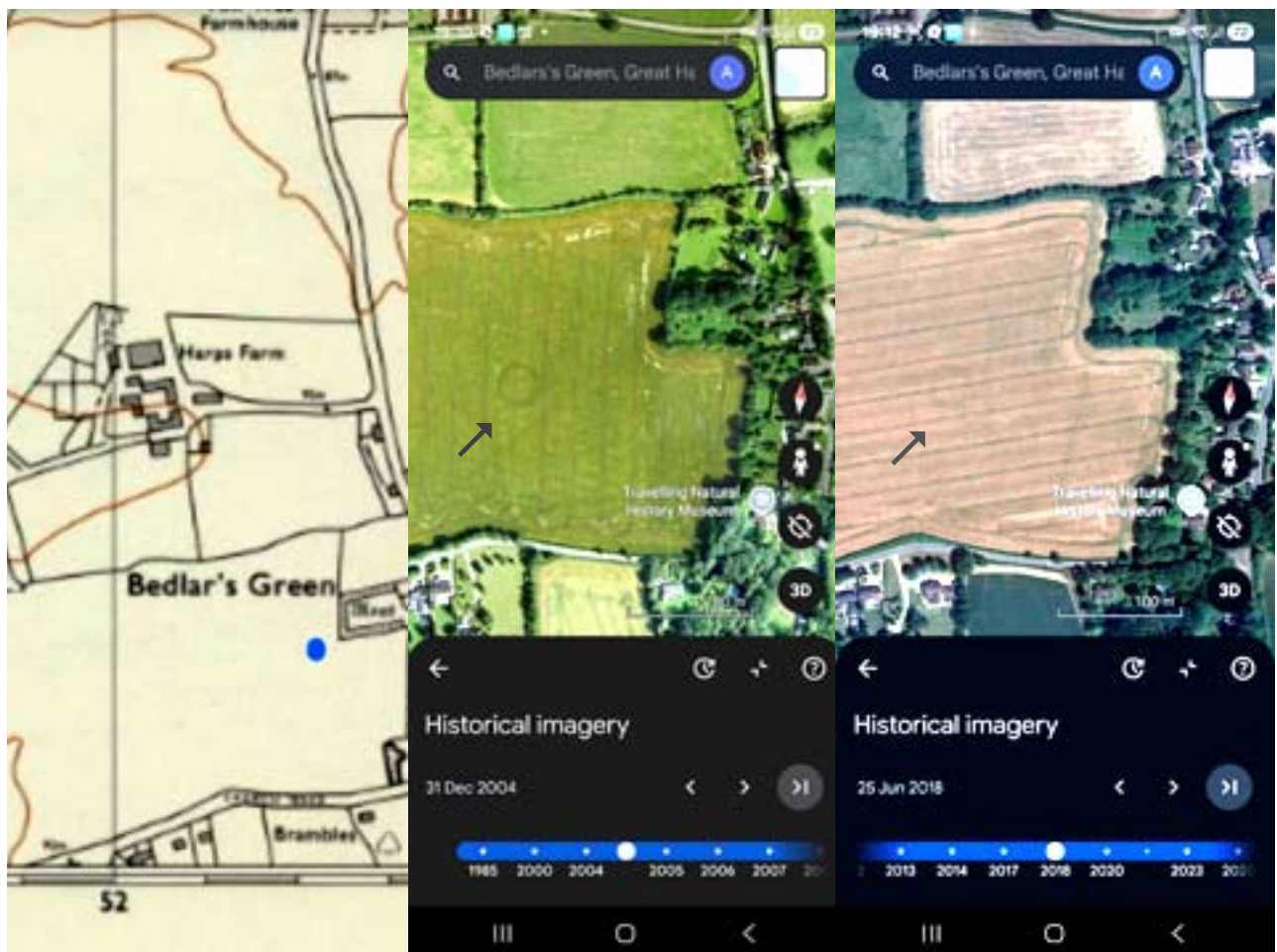
Sometimes history is very frustrating. One knows that something is there but not what it is. Satellite imagery from Google Earth allows us to view changes on the ground from year to year and sometimes things that appear are inexplicable anomalies.

In the two images shown (2004 and 2018), one can see an unnatural circle that appears in some years under certain conditions. I have found no map or physical evidence to explain this, nor any known farming practice that may be the cause.

The tramlines in the field suggest it is around 60 feet (18.3 metres) in circumference and approximately 200 - 300 feet (60 - 90 metres) west of the moat that still remains. I have found no clear evidence for the purpose of the moat or when it was dug.

The circle could have been a ditch surrounding an enclosure for animals or, more likely, a roundhouse. If it were Roman, there would likely be more remains. As there was a lot going on locally in the Iron Age, my thoughts are that it dates from then. It is unfortunate that I will probably never know.

Alan Pinnock





novuscare

Care in the heart of your own home

Are you or an elderly loved one looking for extra care and support at home in **Great Hallingbury or the surrounding areas?** Then our local carers are here to help.

Novus Care is regulated by the Care Quality Commission and can provide a qualified carer to support your loved one in their own home from just **30 mins per week to full-time live-in care.**

For more information or to arrange a **FREE** assessment, please call: 01268 960285 or email: hello@novus-care.com

www.novus-care.com

GRANGE
MAINTENANCE
MOB: 07516 753138



Grass Cutting
Hedge Cutting
Fencing
Turfing
Patio & Driveway
Cleaning Grounds
Maintenance Contracts
Garden Clearances

Contact Will Grange – 07516783138

Or Email

Grangegroundsmaintenance@gmail.com

LEARN HOW TO DRAW & PAINT

For all abilities!

Drawing & Painting
Workshops

Private Art Sessions

Arty Parties



Book via the website!
Great Hallingbury Art Studio
M: 07788 577448
E: info@thearthouseoasis.com

www.thearthouseoasis.com

Essex County Council

Cllr Susan Barker

Dear Great Hallingbury Residents



As I am writing this the clocks are about to fall back and the days are growing shorter. It will soon be Christmas and a time to spend time with friends and family. It will be my first Christmas since I lost my husband to a sudden heart attack, but I know my sons are around and supportive.

County Council is busy as ever with me being a member of a number of committees. As Chairman of the Essex Pension Fund, I have attended my first meeting of the new Pension Pool. This Pool is Yorkshire based, so my first ever trip to Leeds. I do also sit on Audit, Planning and other outside committees including the Stansted Passenger Fund and the Lee Valley Authority.

As your Parish Councillor, I attend Parish Council meetings when I can, although there are often clashes as I have fifteen to get to.

In late November or early December, we are expecting to hear from Government about the next stage of the Local Government reorganisation in Essex and the consultation to follow.

As I write, the Government has not yet decided on whether there will be County Council elections in 2026, although the one election that is scheduled is for a Greater Essex Mayor. This will bring the existing Essex County Council plus Southend and Thurrock back together as a Combined Authority. The precise powers of that Authority are yet to be thrashed out. In 2027, the new Mayor will take over responsibility for the Police and Fire and Crime Commissioner.

I was pleased to be able to give a grant to your Church to help with Tree works and if there any other organisations that could do with some financial assistance towards a

project do get in touch.

Essex has spent £37m of additional money on Essex roads in the last year but there will always be defects that occur. With 5,000 miles of roads, some are only inspected annually. If you are aware of an issue, please do report it online and, if dangerous, please do get in touch with me. <https://www.essexhighways.org/tell-us>

Wishing you and your family and friends a Happy and Peaceful Christmas

Susan Barker

Did you hear about the two monkeys who shared an Amazon account? They were Prime mates.

Free Blood Pressure Checks



Monitors on Loan

Essex residents aged 18 and over can borrow blood pressure monitors for free with no GP referral needed. These are available for up to two weeks from 74 local libraries.

Each loan pack includes:

- blood pressure monitor
- cuff
- guidance leaflet
- diary to record readings
- QR code linking to more guidance



In addition, 15 of our libraries will offer freestanding monitors for walk-in use, allowing users to check their blood pressure readings instantly. You can find

these machines in Saffron Walden, Harlow and Chelmsford libraries.

This initiative supports early detection and monitoring of high blood pressure while reducing unnecessary clinical appointments.

You probably need to hold a library ticket.

View from the Cab

As a result of the hot dry spring, everything seemed to be early this year, including our grain harvest which we started in early July and had completely finished by 7th August (at least three weeks earlier than is normal).



Swallow

House Martin

Nature seemed to be affected too! The Swallows and House Martins were quite early, arriving in the first week of April, but their numbers seemed down on previous years. There were fewer House Martin nests at Harps this year and some of the chicks were dying in the nests because it was so hot!

The Wheatears (an early summer migrant) are often here by late February/early March but I saw a lot fewer early on. There are a lot more now and they might still be here until November or December. They feed on insects and are often in winter wheat crops and spring drilling fields, the latter being bare earthed over winter.



In 2024, the yard Kestrels raised and fledged three young. This year they also used the kestrel box. I'm not sure what went wrong but they built another nest in the same barn on a wooden ledge. This nest had four young in it, later than is usual (because of the failure of the first brood?). Due to the hot weather, there were probably fewer mice and voles about but they also feed on insects. Sometimes the male Kestrel was only returning with food once an hour. The female Kestrel was generally in the vicinity of the nest, protecting her offspring from marauding crows and jackdaws. This was when the barns were being cleaned prior to harvest and there were some mice under the floor of the grain stores. Teazel, my dog, was catching quite a few mice. The female Kestrel was sitting



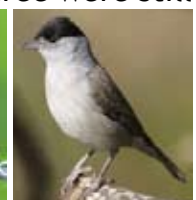
on the workshop roof so I threw a couple of dog caught mice onto the concrete of the yard. The Kestrel ignored them for a while, then she flew down and picked one up, going back to the nest with it. After a couple of days, the Kestrel became used to us providing her with food. Another couple of days later, it got to the point where I could put my arm in the air and whistle and she would fly down and catch the thrown mice before they hit the ground, even taking two in the air on the same pass! It is truly amazing to have a Kestrel flying at you! She could transfer two mice from talons to her mouth without any discernible effort on her flying ability, all in about two seconds. This carried on for more than a week. The female would also go into the barns so we had to be careful not to shut her in.

When you watch nature documentaries, filmmakers very rarely interfere with what is occurring to their subjects (but I do remember one crew trying unsuccessfully to save a severely dehydrated elephant calf). Now, I don't know whether I was right or wrong to do this, but we definitely helped the pair of Kestrels to successfully rear all four of their young. One fledgling was killed by a crow soon afterwards but the other three were still around the yard for some time. Hope they all survived.

During the spring, there were good populations of Whitethroat and Blackcaps around the farm and Hallingbury in general, both of which have fabulous songs. The Whitethroats sing from bramble patches on



Whitethroat



Blackcap

the bund around the farmyard, often visible at the top of the brambles, but if you get too close they drop down into the bushes. The Whitethroats are spring visitors but some of the Blackcaps are here all year round. Also this Spring, the numbers of Linnets and Yellowhammers seemed to be down on previous years but I am still seeing some around now.



This year I saw more Greenfinches than I had for a couple of years as well as many more Bullfinches than I have seen for a long time. When I was a kid, the Bullfinches were always in the garden, especially when the apple trees were coming into bud, their beaks being adapted to strip new buds from trees. As well as apple trees, this year has seen them feeding on willow and hawthorn buds. They are stunning looking birds; let's hope they are on the increase again.



There were a lot of Goldcrests at the farm this year. They feed on coniferous trees (in our case, mostly Scots Pine), eating insects and other invertebrates. Their nests are usually found where a branch grows from the trunk of the tree, suspended underneath the branch by horse hair loops. Very clever little birds, they are the smallest UK (and European) bird.



Goldcrest nest, horse hair loop would have been around branch, the one the other side is broken. Nest made of feathers, horse hair and pine needles

A few weeks ago, in September, I saw a Wryneck - a type of woodpecker - in Great Hallingbury. Thirty years ago, they would occasionally breed here but they are now a rare Autumn/Winter



visitor, usually seen more in the Highlands of Scotland, turning up in November or December. The storm we had in September probably blew them in from Scandinavia and Eastern Europe. Recently on the news, *twitchers* were flocking to Yorkshire, Hampshire and Dorset to see them. I am still seeing the Essex one occasionally now!

The storm in September also brought in something I have never seen before. A flock of Pink Footed Geese turned up in a gravel pit at Thorley. During the day, they are foraging in the fields around it but they roost on the water at night. They are more common in Norfolk, Lincolnshire and Yorkshire and will have travelled from Iceland and Greenland.



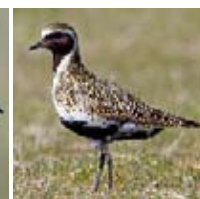
I have also seen a large flock of Snipe on the farm, feeding on insects in the recently planted oilseed rape fields. Snipe are usually seen in pairs later in the winter. There are also quite a few Golden Plovers around. The Lapwings are here too but not in the numbers they used to be. In the eighties there would be thousands following the tractors as they ploughed or cultivated. It is a shame that they are not common now but, as I walked the dog whilst it got dark the other evening, I could hear them calling. To me the noise of Autumn and Winter!

Just keep listening and looking when you are out and about. You never know what you might spot!

David Barlow



Snipe



Golden Plover



Lapwing

Stephen's Gardening Service

All aspects of garden maintenance undertaken



grass cutting
pruning
hedge cutting
jet washing /
cleaning
and more

Tel: 07730 201664

*Stephen is a long standing
Great Hallingbury resident*



The Street, Takeley, CM226QW 01279 870738
www.timberscattery.com

LTH Waste Removal and Luxury Toilet Hire (UK) Ltd



LTH (UK) Portable Toilets supplies and maintains building site toilets, with weekly / ad hoc servicing as required. Existing site toilets and welfare units can also be maintained for the duration of the building project.



LTH Waste Removal is your local service provider for liquid waste removal, including:

- Cesspits
- Septic tanks
- Klargesters and Bio disks



Whether you are arranging a wedding, private party or corporate event, let **Luxury Toilet Hire (UK) Ltd** provide you with the perfect toilet facility to make your occasion a memorable success. Please visit www.luxurytoilethire.co.uk



Based near Great Hallingbury, we provide a personal, professional and efficient service at very competitive rates.

For a free quotation, please contact us:

Tel: 01279 504638 or 01371 873003 Yard: 01371 871871 Email: info@luxurytoilethire.co.uk



Sweeps
Chimney Services

**CLEAN CHIMNEYS ARE SAFER
CHIMNEYS**

Chimney Sweeping
Stove Servicing & Maintenance
Nest Removals
CCTV Inspections
Bird Guard & Cap Fitting
and much more

07703 740638

www.townandcountrysweeps.com



VANS AUTOS



MOT TEST CENTRE

Class 4 and Class 7 vehicles
Service and Repairs

Opening Hours

Monday – Friday 8am – 5pm
Saturday - by appointment only

**Tel: 01279 724534
or 07778 217304**

Fly-tipping

A Local Problem

Fly-tipping has become the scourge of our countryside and we are seeing more and more of it, even here in Great Hallingbury and the surrounding areas. In the past it was the opportunistic idiot that would just pull in to a gateway and drop off garden waste, household rubbish or a small amount of building materials. Now it has become a well-organised criminal activity, with some fly-tips costing tens of thousands of pounds to clear up.



Costly Clean Ups

The cost of clearing up by both the Council, if on a roadside, and Private Landowners, if on farmland, is huge. This is not sustainable.

A recent fly-tip on our farm was of building rubble and waste; obviously someone had some work done modifying their bathroom. The builders have then left the job and instead of paying to dispose of the materials they have saved *a few quid* by tipping it in our gateway, cutting through the padlock and chain. The cost for us to remove it will be in the region of £300. We get anywhere between 30 and 40 of these a year and we have to pay for the clear up.



Household Waste

We then also had a criminally organised tip in a field of lucerne, where we had over 90 tons of trommel waste tipped. (Trommel fines are the small particles of waste left over after larger waste has been sorted through a screen.) This cost us £20,000 to

get cleared away. Again they cut through secured gates with ease, as now a battery powered cutting disc is so easy to use and available.

You may well ask why we do not block all our gateways with logs and concrete bollards; well, we still need access to farm the land on a regular basis. This operation was definitely organised by criminal gangs who look to help make huge sums of money by not using the designated sites for the disposal of these materials.



Trommel Waste

What Can Be Done?

So how do we stop this happening? In 2023-2024, 60% of fly-tips involved household waste. We each need to know where our materials are going after we have building work done on our houses. Never pay a small amount to somebody to clear away some waste who just happens to be in your area - take responsibility for your waste.

Be vigilant, keep an eye out for anything that looks suspicious and if you see somebody in the act of fly-tipping then phone 999 and report it. You may also record some details or have some footage on a dash-cam. Please report this to either the police or online to the District Council where you can download details.

We need to act and we need to find a way to reverse the trend - imagine the day when we, as farmers, stop clearing it up as we cannot afford to do it anymore. We need to all work together to preserve our green and pleasant land.

Tom Streeter



Stansted Airport: Sound Insulation Grant scheme

London Stansted's enhanced sound insulation grant scheme can provide funding to help deal with excessive aircraft noise.

You can apply for funding from London Stansted Airport to install acoustic insulation in your property if you are affected by aircraft noise.

About the grant

The grant can be used to fund acoustic insulation for buildings that are exposed to medium to high levels of noise (57dBA Leq or more).

What you can apply for

The grant will pay for insulation to reduce noise such as:

- double glazing
- mechanical ventilation
- loft insulation

Households subject to high levels of noise (69dBA Leq or more) can also apply for funding to help with the cost of relocating

Eligibility

The scheme offers support to those who experience the greatest noise impact.

There are 4 levels of grant:

Zone A (green) - up to £5,000

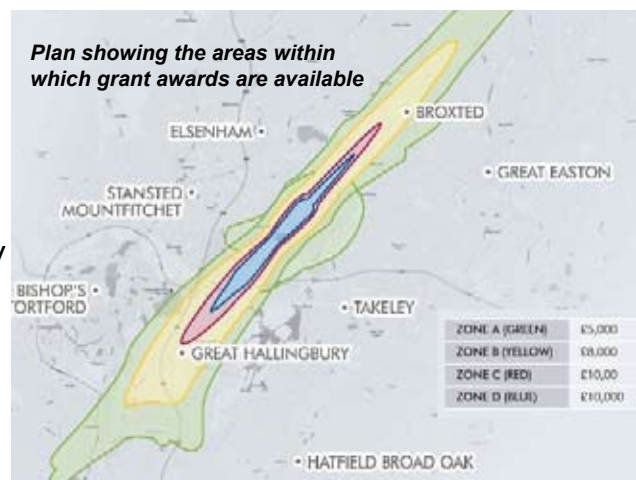
Zone B (yellow) - up to £8,000

Zone C (red) - up to £10,000

Zone D (blue) - up to £10,000

Further information

For further information on the scheme and to check if your property is eligible you can email community@stanstedairport.com.



Book Corner



Book Corner

The Vanishing Half

by Brit Bennett

Mallard, a very small town in Louisiana, had an unusual beginning. It had been founded many years before by a light-skinned black man - formerly a freed slave - who realised that he would never be accepted as a white man but refused to be treated as a Negro. Each generation that followed was lighter in colour than the one before so, when the Vignes' twin girls are born in 1938, Stella and Desiree have *creamy* skin, hazel eyes and wavy hair. None of these attributes, however, could protect them entirely from racism as they are growing up. Even their mother makes them leave school at 16 to start work as cleaners for a wealthy white family.

For some time, the girls had been thinking about leaving Mallard and this was *the last straw*. They would go to New Orleans, their nearest big city. Once there, they found jobs (though poorly-paid) and somewhere to live but, when Stella is looking for something different, she applies for a secretarial position. This would not normally be given to a black woman but, because her skin is so light in colour, she is able to *pass*.

And this is the essence of the *story*. At this time and in this place, the colour of your skin affected your life in so many ways, both as adults and as children - your heart will go out to Jude when she first goes to school!

Move forward many years later and one sister lives with her black daughter in the same town she once tried to escape from while the other twin *passes* as white with a *white* daughter and a *white* husband who knows nothing of her past.



Eventually, Jude and Kennedy, the daughters of Desiree and Stella, cross paths. What will happen when they realise that they are cousins? And how will this affect their mothers? Read on!

Your Call

What My Listeners Say and Why We Should Take Note by Jeremy Vine
Non-Fiction For A Change!

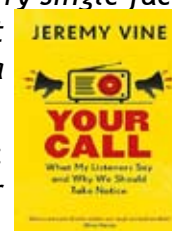
Even if you don't listen to Radio 2 on weekdays at 12, most people are familiar with the name of its presenter. Over the years, Jeremy Vine has fronted *Newsnight*, *Crimewatch*, *Points of View* and, of course, *Eggheads* from 2008 to 2024.

Your Call is an account - hilarious at times but also thoughtful and informative at others - of his experiences as the host of the BBC Radio 2 lunchtime show when listeners can phone in with questions and comments. By the summer of 2015 (after 12 years in the chair), he had taken almost 25,000 calls. When the actual 25,000th finally arrived, however, it was rather a *let-down*!

You may remember him on *Strictly Come Dancing* in 2015 with Karen Clifton (now Hauer) as his partner. His descriptions of his experiences, both in rehearsal and on the dance-floor, kept me laughing for the whole chapter! During their practice for the American smooth, he had to raise Karen above his head. After his first attempt, she said, *Jeremy, could you do the lift again but, this time, without clutching my v - - - - ?*. That was when he started to write down her best one-liners!

Many, more serious, issues have been covered over the years including current (of the time) political and social affairs. The listeners give their own points of view but, in the book, he adds his own thoughts and reflections to the wide range of discussions. At one point, he considers these statements: *Every single fact is up for debate* and *A fact is an opinion, disguised as a certainty*.

From *Strictly* to *Philosophy*: Jeremy - and his listeners - cover it all!



Jan Baldwin

The Hundred Parishes Society



Before the *dissolution of the monasteries*, instigated in 1536 by King Henry VIII, the Hundred Parishes area had its fair share of religious houses - monasteries, convents, abbeys and priories. The remains of some can still be seen today.

Tilty Abbey is one. It was founded for Cistercian monks in 1153 and prospered, mainly due to the wool trade, before being dissolved. In 1220 a chapel was built outside the abbey gates for use by visitors. The chapel survives and today functions as Tilty's parish church. Little remains of the other abbey buildings but the site can be visited; interpretation boards inform the visitor and give an artist's impression of what the site would have looked like.



Little Dunmow Priory was founded in 1104 and was home to Augustinian monks until the Dissolution. Most of the priory church was demolished but the southern aisle survived and is now used as the parish church.

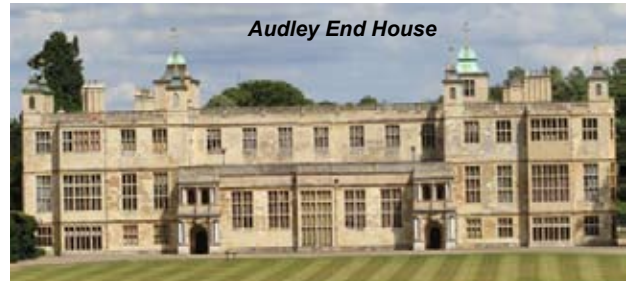


Several of our larger hospitality venues were developed on sites of former religious houses: Hanbury Manor in Thundridge was once Poles Convent; Down Hall in Hatfield Heath evolved from a 14th-century monastery; while



Leez Priory in Felsted became the home of Richard Rich through his leading role in dissolving the monasteries.

In Saffron Walden, Audley End House was built on the site of Walden Abbey, founded in the 12th century and whose lands were granted in 1538 to Sir Thomas Audley, Henry VIII's Lord Chancellor. The present house was built some 60 years later by his grandson Thomas Howard.



While we tend to think of religious houses as a bygone era, Pleshey has one that is relatively new and active. Its House of Retreat was founded as a convent in the early 1900s and became the first Diocesan Retreat House in England in 1927.



Ken McDonald, Secretary
www.hundredparishes.org.uk

Different lights
make me strange,
for each one my
size will change.
What am I?

!ldnJ

Highlights from the Minutes of Meeting of Great Hallingbury Parish Council

8th September, 2025

Present: Cllr Alan Townsend (Chairman), Cllrs David Barlow, Mark Bloomfield, Neil Jackson, Andrew Noble and Alan Pinnock, Mrs Urška Sydee (Clerk), District Cllrs Geof Driscoll and Neil Reeve, Essex County Cllr Susan Barker

Chairman's Activities

Chairman, Cllr Townsend, asked the Council for approval to lay a wreath at the Church on Remembrance Day, the purchase of which was agreed.

The Chairman reported that he had:

- Attended EALC meeting
- Howe Green House School speech day
- visited Parliament at invitation of MP Chris Vince along with Cllrs Coletta, Pinnock and Waring
- Uttlesford Health and Wellbeing meeting
- EALC executive meeting
- UALC meeting
- Checked defibrillator weekly
- Met with Clerk online weekly
- Helped clear the churchyard and thanked Cllrs Jackson and Pinnock for their help.

Uttlesford District Council

District Cllr Driscoll reported on the Government's reorganisation of local government. There are four schemes and the proposed numbers of Unitary authorities are five, four or three. Documents on the schemes are now on the website. UDC will be voting on 23rd September on their preferred scheme and the final number of unitaries should be known by 6th March, 2026.

Progress with the development of the Local Plan is on schedule.

The Community Infrastructure Levy is

scheduled to be in place at a similar time to the Local Plan

Essex County Council

Cllr Barker reported that only Essex Parking Partnership can deal with the cars parked on the B1256.

A grant was given to St Giles' Church for a tree.

Village Hall

Cllr Pinnock reported that preparations for the Christmas Lights Switch On are under-way.

Litter Pick

Cllr Bloomfield reported that the litter pick will take place on 5th October, 2025, starting at 10 am from two locations: the Hop Poles, Bedlars Green, and the Church car park, Church Road.

Post Box at Top Of Goose Lane by Woodside Green

The MP's office had not received any reply from Royal Mail. A letter will be written and hand signed by MP Chris Vince.

Flitch Way Bench

The bench was delivered to Flitch Way Friends and is awaiting installation.

White Lining In Car Park

Cllr Townsend reported that he had not been successful in finding a company to provide that service.

Bedlars Green

Parking is a civil matter and therefore the Parish Council cannot help or get involved. UDC enforcement cannot help as there are no parking restrictions. If it is obstruction, the Police may be able to help.

It was agreed to investigate how to apply for the Pump at Bedlars Green to become a non - designated heritage asset.

Bins

The Council discussed dog and waste bins. There is a dog bin outside the Village Hall. UDC do not provide new bins and they would not collect from new locations should the

Parish Council install one. The Council will not, therefore, install any new bins.

Stansted Airport Watch Foundation

A letter received seeks Councillors to volunteer to become directors of SAWF.

Christmas Lights Switch On

Christmas Lights Switch On will take place on Saturday, 29th November, 2025, starting at 18.30.

Planning

Application No // Site and Development // Decision (the Council's comments are shown in brackets)

Application Decisions

UTT/25/0812/FUL // Stansted Distribution Centre, Start Hill // Various // Approved // The Parish Council's objections were fully detailed in the last issue of Great Hallingbury Highlights.

UTT/25/1130/FUL // The Old Forge, Woodside Green // Conversion and change of use of garages to form tourist accommodation // Approved (No objections other than increased traffic in general and also with unsociable hours of comings and goings.)

UTT/25/1232/AV // Start Hill Service Station // Erection of an illuminated small format advertising display // Refused (The Parish Council's objections are fully covered in a previous issue)

UTT/25/1346/HHF // Centuries, Church Road // Proposed outbuilding // Approved (No objections) (UDC change: Proposed removal of concrete slab, erection of an outbuilding and replacement of existing fence with a new fence)

UTT/25/1332/OP // Alpenrose, Bedlars Green // Outline application with all matters reserved except appearance and scale for demolition of existing dwelling and erection of four dwellings // Awaiting Decision (The Great Hallingbury Parish Council raised concerns covered in a previous issue)

UTT/25/0895/OP // Victoria Park, New Barn Lane // Outline application with all matters reserved except access for the partial demolition of the existing dwelling and the removal of the tractor store, shed and other

structures on the site and the erection of two detached dormer bungalows // Awaiting Decision (Objections: it is in the Green Belt so could be considered a threat to the conservation area and already on a road with speeding traffic which is highly dangerous due to the slightly curved nature of the road with trees/vegetation growing along both sides of it)

UTT/25/1451/FUL // Barnmead, Start Hill // S73 application to remove conditions 6 (Residential Travel Pack) and 10 (Construction Method Statement) of UTT/21/2337/FUL (Conversion of garages from plots 2-5 into living accommodation and adding a room in the roof of plots 2 and 3 (amendment to previously approved application No. UTT/18/1982/FUL) // Awaiting Decision (The Parish Council's objections may be found in the last issue)

UTT/25/1569/HHF // Centuries, Church Road // Proposed single storey rear extension with internal alterations // Approved (no objections)

UTT/25/1570/LB // Centuries, Church Road // Proposed single storey rear extension with internal alterations // Approved (No objections.)

UTT/25/1542/FUL // London Stansted Airport // Airfield works comprising two new taxiway links to the existing runway (Rapid Access Taxiway and Rapid Exit Taxiway) to enable continued airfield operations of 274,000 aircraft movements and an increase in passenger throughput from 43 million terminal passengers to up to 51 million terminal passengers in a twelve month calendar period // Awaiting Decision (The Parish Council's extensive objections will be found in the Autumn edition)

UTT/25/1566/FUL Land South of Greenways, Woodside Green // Create access track with highway access between Goose Lane and Pond View, Woodside Green // Refused (The Parish Council raised objections which were enumerated in the last issue)

UTT/25/1665/LB Wallwood, Woodside Green // Demolish existing unstable outbuilding // Withdrawn (No objections.)

UTT/25/0931/FUL // ATM Start Hill -

Proposed side extension to the existing sales building // Await decision (Parish Council Objections were listed in previous issue)

Applications Dealt with at Meeting

UTT/25/1922/HHF // Highfield, Church Road // Single storey rear extension to replace the existing conservatory, two storey front extension, erection of a side cart lodge, rear first floor extension, bay windows to be altered, rear dormer to be rebuilt along with new pv panels on the flat roof and changes to the fenestration (No objections)

UTT/25/1854/FUL (Not asked officially) // Cranwellian, The Street, Takeley // Removal of all existing structures, foundations, internal fences, poles and manège materials, drainage pipes, chambers and tanks, adaption of the existing site access and the erection of six residential dwellings with associated infrastructure // Objections: Although this development falls in the Parish of Takeley it borders Great Hallingbury Parish. Great Hallingbury Parish Council was alarmed to see such a catastrophic fire at Cranwellian in May 2023. We understand that fire crews struggled to obtain sufficient water pressure at this location at 2 am due to the property being at the end of two water supplies (Bishops Stortford and Takeley). This site has a history of contaminated land and serious issues regarding surface and foul water drainage. We are informed senior UDC officers have visited this location previously and are aware of the situation. This site has no mains drainage. The submitted Drainage plan doesn't appear to demonstrate an adequate capacity to manage the discharge from the foul water treatment plant which appears to be pumped outside the development - to where?

Vehicle access would be immediately onto a junction on the B1256, a 40mph road. Planning application UTT/21/3777/OP, just meters from this location, had previous objections from ECC Highways regarding access onto the B1256. The proposed development also shares excessive noise (with UTT/21/3777/OP), sharing a close proximity to Stansted Airport and the A120. Excessive noise is a constant issue in this area with minimal

mitigation available whilst enjoying outside areas. It will have a significant negative impact on occupants' mental health and wellbeing.

UTT/25/2116/HHF // Fairview, Bedlars Green // Alterations and single storey rear extension (No objections.)

UTT/25/2108/OP // Land at Howletts, The Street // Outline application, with all matters reserved except for access, for one detached self build dwelling using existing access (No objections.)

UTT/25/2106/FUL // Unit 8 Stansted Distribution Centre, Start Hill // Erection of two condenser units to rear of property. (No objections as long as it does not cause noise to those living in vicinity.)

UTT/25/2131/HHF // Old Elm, Tilekiln Green // Single storey rear extension (No objections.)

UTT/25/2132/LB // Old Elm, Tilekiln Green // Single storey rear extension (No objections.)

UTT/25/2147/FUL // Land North of The Gatehouse, The Street // Erection of two detached dwelling houses and related works including upgraded access, parking, amenity areas and landscaping (alternative to approved scheme at Appeal under application UTT/23/1878/FUL) (No objections.)

UTT/25/2181/OP (Not asked officially) // Land at Camps Field, Lower Road, Little Hallingbury // Outline planning application, with all matters reserved (except for principal access), for the demolition of existing structures and erection of up to 59 dwellings, including affordable housing, associated green and hard infrastructure, public open space, biodiversity enhancements and principal access off Lower Road. (As a neighbouring Parish we would like to point out that this development will cause more access traffic through our village and as such we oppose it.)

Oak Trees at Bedlars Green

Cllr Pinnock asked if the two oak trees are subject to a Tree Preservation Order. If not, it was agreed that the Parish Council should apply for one.

Easy Eating

Two recipes with a view to using Christmas leftovers - stilton and mincemeat

Leek and Stilton Soup

Ingredients:

350 g (12 oz) leeks
600 ml (1 pint) milk
2 bay leaves
A little freshly grated nutmeg
75 g (3 oz) butter
75 g (3 oz) plain flour
1.2 litres (2 pints) stock
Salt and freshly ground black pepper
150 g (5 oz) Stilton cheese, coarsely grated
A little single cream
Freshly chopped parsley or chives

Directions:

1. Cut the leeks into four lengthways and shred finely on the diagonal. Wash and drain thoroughly.
2. Measure the milk into a small saucepan, heat until hand hot over a low heat, then add the bay leaves and a grating of nutmeg. Cover the pan and simmer very gently to infuse the flavours for about 10 minutes.
3. Melt the butter in a pan then add the flour and cook for a few moments. Add the strained hot milk, stirring well, then add the stock. Stir in the leeks, season (using very little salt because of the salty cheese and bring to the boil. Simmer for a few minutes then add the cheese and stir well. Cover and simmer over a low heat for 15 minutes until the leeks are tender.
4. Check the seasoning. If the soup is a little too thick, thin down with milk or stock. Serve with a little added single cream and garnish with freshly chopped parsley or chives.



Mincemeat Flapjacks

Ingredients:

150 g salted butter, plus extra for greasing
4 tbsp golden syrup
75 g light brown soft sugar
250 g porridge oats
3 tbsps mixed seeds (including pumpkin, sunflower, linseed and sesame)
1 orange (scrubbed) zest
200 g jar Christmas mincemeat

Description:

1. Preheat the oven to 200°C, gas mark 6. Grease and line the base and sides of an 18 cm x 25 cm baking tray with baking parchment. Put the butter, golden syrup and sugar in a large heavy-based pan. Heat gently, stirring often, until the butter and sugar have just melted and the mixture is beginning to bubble (3 - 4 minutes). Remove the pan from the heat and tip in the oats, two thirds of the seeds and the orange zest. Using a wooden spoon, mix everything together well.
2. Tip 1/2 the mixture into the prepared tray. Dip a large metal spoon into cold water, then use the back to evenly spread the mixture out into a thin layer. Spoon over the mincemeat and carefully spread it over the top. Finish with the remaining oat mixture, levelling it off as best you can, then scatter over the remaining seeds. Bake until golden, bubbling and beginning to caramelise slightly around the edges (18 - 20 minutes)
3. Use a knife to score the surface of the flapjack into 12 fingers, then leave in the baking tray to cool before turning them out onto a board and cutting through properly. The flapjacks will keep in an airtight container for six days.



Great Hallingbury Village Hall

Upgrades

The Village Hall Committee is constantly seeking to maintain the hall to a high standard and make improvements when possible.



Over the summer, we have had a complete inspection of the electrical system which involved a number of upgrades such as some lights operating in response to movement detectors and all new emergency exit lighting. Our thanks to Glenn Salmon at Stort Electrical and Keycutting.



Hearing Loop

There are now two new assets in the Village Hall. In addition to the projector and sound system installed for our regular clients, we now have a hearing loop which will be available for anyone using the hall who has need of the assistance of such an aid.



Variable Lighting

In addition, we now have a special fixture in the main hall to provide coloured and atmospheric lighting to augment our existing facilities for parties and events.

Hiring the Hall

Don't forget that the Village Hall is available for hire for your own events such as children's and family parties. Just contact Lee or Sarah on 07544 921459.

Lee Cox, Chairman

**GREAT HALLINGBURY
VILLAGE HALL**

QUIZ NIGHT

**SATURDAY
6TH DECEMBER, 2025**

**GREAT HALLINGBURY VILLAGE
HALL 7 FOR 7.30 PM**

 £5 PER PERSON AT THE DOOR - TABLE OF 6 OR 8
 OR JOIN ANOTHER GROUP
**RESERVE YOUR TABLE FROM VAL
(07979 450871)**

GOOD PRIZES AND RAFFLE
BRING YOUR OWN FOOD AND DRINK

ENJOY A CONVIVIAL EVENING
SUPPORT THE VILLAGE HALL

Christmas Tree Lights Switch On

**Saturday, 29th November
at 6.30 pm**

with mulled wine, mince pies, sausage rolls
and sweets for children

Followed by:

Social Evening

bring your own drinks
and nibbles

No charge



The Physiotherapist

JULIE HERBERT MCSP BSc (Hons) MAACP

Associate NATALIE HILLIARD MCSP BSc (Hons)

The Street Barn Clinic, The Street, Great Hallingbury, CM22 7QR

Telephone or Text: 07712 230391

Book Online at www.thephysiotherapist.net

Treatment for all your joint and muscle pain from head to foot

Treatment for any neurological conditions, including Parkinson's, Stroke, MS, ME and Long Covid

SPORTS INJURIES RSI • HEADACHES • KNEES • BACK PAIN
NECK PAIN • TENNIS ELBOW • PRE & POST OPERATIVE REHAB
SHOULDER PAIN • ARTHRITIS etc.

Daytime and evening appointments available

www.thephysiotherapist.net



Electrical & Locksmith

"Local, reliable, qualified & insured"

Electrical Services:

- Lighting Upgrades, repairs, replacements
- Outside power
- Extractor Fans
- Alarms, CCTV & Home Automation
- EICRs (Electrical Installation Condition Reports)
- Rewires & Repairs
- Fault Finding & Problem Solving
- Electric Garage doors, gates etc.

Locksmith Services:

- Lock Repair, Replacement & Upgrades
- Key Cutting (we come to you - most keys £5)
- Lockouts
- Door and Window Mechanism repair or replacement
- Door alignment and problem solving

Call: **07775 725 748** Email: glenn@stortelectrical.co.uk

Discounted rates for Hallingbury Residents!
(because I live here too!)

www.stortelectrical.co.uk

www.stortlocksmith.co.uk

Parish Council Chairman

Hello to you all. I hope you and your families are keeping well.



In my last message I told you that our MP was inviting everyone in his constituency to a Question & Answer session at Hatfield Broad Oak village hall. This was held on Friday, 19th September, and it was very pleasing to see several people from our village attending and asking questions of our MP. We are still waiting to find out to which District authority we will be attached.

Along with Cllr Neil Jackson, we have continued to keep the grass cut in the churchyard. We are now battling with the leaves and will continue to carry out other jobs through the winter. If anyone can offer help it will be much appreciated.

The Speed Watch Team has been unable to get out due to lack of people available. Cllr Mark Colletta would really like to hear from anyone who would like to be part of this team.

By the time you read this, the clocks will have gone back and the nights will be drawing in. Please be aware through the winter months, if you know of anybody who is on their own, that you check up on them from time to time to make sure they are well and OK. Remember that there are grants available from Uttlesford to help if anyone is struggling financially. Hopefully, for anyone who is eligible, the winter fuel allowance will be resumed as promised.

Please make a note of the Christmas Tree Lights Switch On at our Village Hall. It will be held on Saturday, 29th November, at 6.30 pm and is open to all residents of Great Hallingbury. Once again, the Parish Council will be providing mulled wine, mince pies and sausage rolls (no charge). Please do come along and share this lovely event with your fellow villagers.

I would like to thank Christine Coultrup and Gill Sewell for arranging a Coffee Morning in aid of the Poppy Appeal. It really was an enjoyable morning and thanks to all who helped out for their hard work.

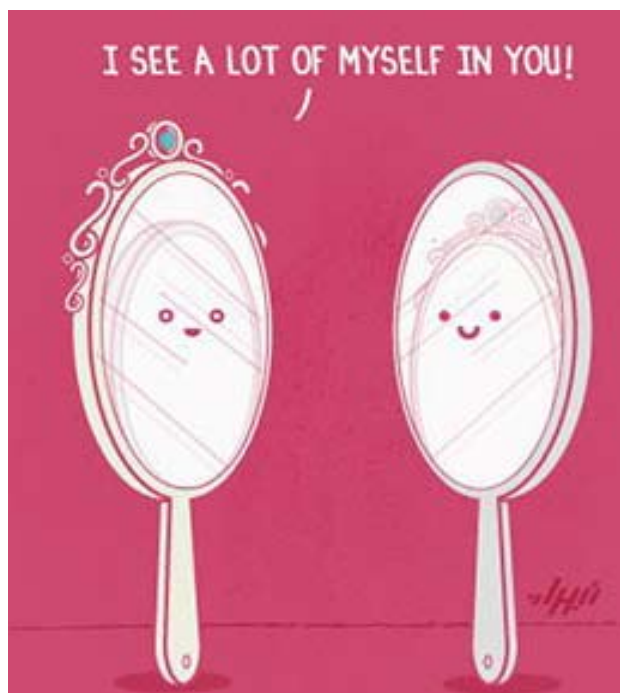
The Government has agreed to a new runway at Heathrow and also Gatwick. Hopefully this will take the strain from our area but it is something that needs to be kept an eye on since Stansted has applied for an increase in passenger numbers.

Cllr Mark Bloomfield once again arranged a litter pick in October. As usual, the vast amounts collected show how much litter is thrown out of cars passing through the village. You may have seen the pile of pink bags in the village car park which were ready for collection on the Monday. Well done Mark. Thanks also to the PCC who allowed our litter pickers to use the facilities at the church and provided us with refreshments.

And finally, as always, I would like to thank all my fellow Councillors and our marvellous Clerk, Urška, for all their hard work through the year.

I would like to wish you all a very Merry Christmas and a Happy New Year. Stay safe and have a great time.

Alan Townsend





Poppy Appeal 2025



Community Agents

Part of Essex Wellbeing Service, Community Agents is a free to access home visiting service, helping people to live independently in their own home. We can help anybody over the age of 18 who is in particular need of a home visit in order to source the support needed.

We are not carers, but Community Agents can assist with:

- **Equipment**
Assess and arrange installation for grab rails, bed rails, steps, toilet aids, bathing/showering aids, furniture raisers.
- **Blue Badges and Bus Passes**
Complete applications and renewals.
- **Benefits**
Assist with benefit form completion or signpost to the relevant, local service.
- **Social Opportunities**
Community Agents know many local clubs and activities and have details of what's on in your local area.
- **Transport**
Advise on community and hospital transport links.
- **Meals and Shopping**
If preparing meals or shopping is becoming difficult we have details of options that may be suitable.
- **Carers' Support**
Provide support to unpaid carers including sourcing respite options and carers' support groups.

Please call EWS direct on 0300 303 9988 to refer yourself, family member, friend or neighbour to Community Agents. Please note that you must have the referrer's permission. Lines open Monday to Friday 8am - 7pm and Saturday 9am - 12pm.

There are current vacancies for community agents in West Essex if the work interests you.

The first of this year's Poppy Coffee mornings has already taken place. More than fifty people attended the event at Pantiles last week. With money still being donated, our total is already well over £600.

Everyone is aware that we no longer have house to house collections and the need for the Campaign continues to grow with more Service Veterans needing support.

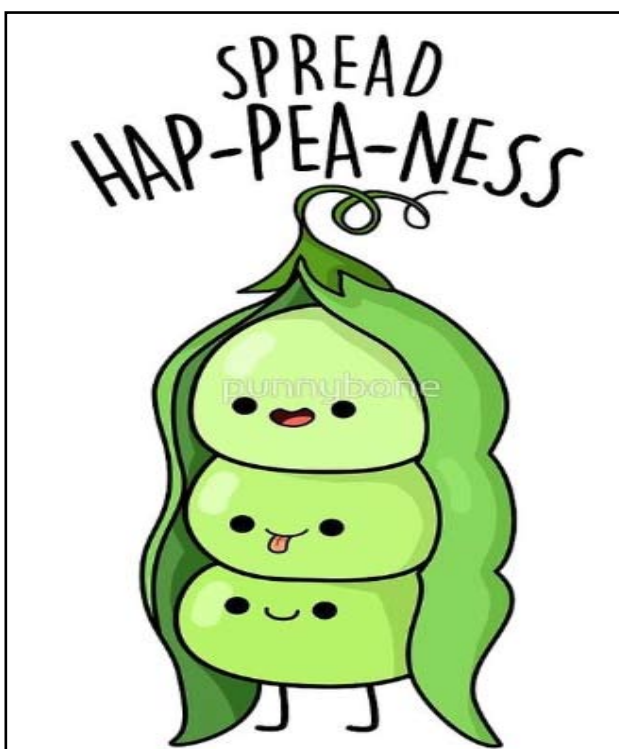
Thanks to Christine Coultrup for holding the event at Pantiles again this year and allowing us to use her kitchen to make the coffee and deliver the cake. We nearly ran out of cups this year.

There will be another Coffee morning at Howe Green House School. Collection boxes will be found at both Howe Green House and Little Hallingbury Primary Schools, the shop in Little Hallingbury and a few other places.

Thank you to everyone for your support.

Gill Sewell

Poppy Organizer for the Hallingburys





A Christian Bear

A man is walking through the woods when he sees a bear charging at him.



He knows he can't outrun a bear for long, so he starts praying. "Dear Lord, I beseech thee. Please, O Lord, please let this bear be a Christian!"

The bear catches up to him, knocks him down on the ground, then gets on its knees and says, "Dear Lord, thank you for this food I am about to receive..."

Services in the Hallingburys

December 2025 - February 2026
G = St Giles' M = St Mary's

G	Dec 7	9 am	Holy Communion
M	Dec 14	11 am	Morning Worship
M	Dec 14	6 pm	Café Church
G	Dec 21	11 am	CAROL SERVICE
M	Dec 24	3 pm	CRIB SERVICE
M	Dec 24	11.30pm	MIDNIGHT MASS
	Dec 25	11 am	No service in the Hallingburys. Six Villages Joint Service at St Mary, Sheering
	Dec 28	9 am	No service in the Hallingburys. Six Villages Joint Service at St John, Bush End
G	Jan 4	9 am	Holy Communion
M	Jan 11	11 am	Morning Prayer
M	Jan 11	6 pm	Café Church
G	Jan 18	9 am	Holy Communion
M	Jan 25	11 am	Holy Communion
G	Feb 1	9 am	Holy Communion
M	Feb 8	11 am	Morning Prayer
M	Feb 8	6 pm	Café Church
G	Feb 15	9 am	Holy Communion
	Feb 18		Ash Wednesday TBA
M	Feb 22	11 am	Holy Communion

Please Note:

You are advised to check our website at www.thesixvillages.org for the most up-to-date and accurate information.

The website has details of all services taking place across the Six Villages, and information about special events, our contact details and how to get involved.

Great Hallingbury
Village Hall &
Parish Council

Christmas Tree Lights Switch On

with Mulled Wine, Mince
Pies, Sausage Rolls

**Saturday
November
29th
at 6.30 pm**

followed by

Social Evening
NO CHARGE
Bring your own drinks
and nibbles



Calendar

November 2025

- 29 Library Van - Bedlars Green 13.45 - 14.15
- 29 *Christmas Tree Lights Switch On* - Village Hall at 6.30 pm followed by Social Evening

December 2025

- 2 District Councillors' Surgery - Village Hall 2 - 4 pm
- 6 Village Hall *Quiz Night 7* for 7.30 pm
- 9 Hallingbury Ladies - *Christmas Celebration* - Village Hall 7.30 pm
- 20 Library Van - Bedlars Green 13.45 - 14.15

January 2026

- 5 Great Hallingbury Parish Council - Village Hall 8 pm
- 6 District Councillors' Surgery - Village Hall 2 - 4 pm
- 10 Library Van - Bedlars Green 13.45 - 14.15
- 22 Hallingbury Ladies - *Annual Dinner*
- 29 - 31 Little Hallingbury Panto - *Robin Hood* - Little Hallingbury Village Hall (see page 5)
- 31 Library Van - Bedlars Green 13.45 - 14.15

February 2026

- 3 District Councillors' Surgery - Village Hall 2 - 4 pm
- 11 History Society - *Ramble Down Early Nineteenth Century Lanes* - Village Hall at 8 pm
- 15 Easton Lodge - *Snowdrop Sunday*
- 19 Easton Lodge - *Snowdrop Open Day*
- 21 Library Van - Bedlars Green 13.45 - 14.15
- 22 Easton Lodge - *Snowdrop Sunday*
- 26 Hallingbury Ladies - Village Hall 7.30 pm

Come to the next Parish Council meetings - ask your questions - give your views. See how the Parish Council works for you.

Monday, 5th January 8 pm Village Hall

Monday, 2nd March 8 pm Village Hall

Annual Parish Meeting

all residents may attend to be updated on matters in the village

Monday, 16th March, 2026, at 8 pm